



THUASNE

SILIMA[®]

Professional
Magazine 2020





We are delighted to present the new SILIMA® Breastcare catalogue:

The SILIMA® collection is one of the core segments of the THUASNE Group, whose expertise in orthopaedics and compression is known worldwide. In addition to a complete range of external breast forms in a wide variety of styles, the catalogue also includes various lingerie and swimwear series for daily comfort, safety and restoring the female silhouette.

Drawing on many years of experience in the manufacture of high-quality compression treatment aids, THUASNE offers a complete concept for the interdisciplinary therapy of lymphoedema and breast care. We look back on many years of international competence, especially in the field of thoracic care, and are now creating a uniquely coordinated all-round collection with breast forms, functional lingerie, swimwear and even compression clothing: Reliable, highly effective, easy to use and comfortable to wear.

The products in this catalogue are the pride of our Group. As a strong partner for your important work, we would like to support you with this current SILIMA® Professional Magazine and hope to contribute to your success.

Warmest regards

Elizabeth Ducottet
Président Directeur Général

A handwritten signature in black ink, appearing to read 'Elizabeth Ducottet', written over a thin horizontal line.

Contents

THUASNE CARE CONCEPT

Competence and product range: THUASNE breast cancer aftercare	06
---	----

SILIMA® LINGERIE

Medical & Sport	12
Fibrefill breast forms	14
Daily	15
Lace	20
Support	25

SILIMA® BREAST FORMS

Care following conservative surgery	30
Post-mastectomy care	34
Treatment after radically modified mastectomy	39

SILIMA® SWIMWEAR

42

What you should know about breast cancer	44
The various types of surgery for breast cancer, Adjuvant therapies	45
Care and cleaning	46
Accessoires / Service	47
Nipples	47
How to measure and fit correctly	48
SILIMA® size table	49
SILIMA® bra overview	50
SILIMA® breast forms overview	52

SERENA®

54



Global network:
8 proprietary production facilities
and 20 offices around the world

Benefits of our location:
Manufactured and adjusted
to fit perfectly in Germany

Wealth of experience:
THUASNE is synonymous with 170 years
of expertise in the field of medical textiles.

WINGS FOR YOUR HEALTH

THUASNE is one of the most successful international orthopaedic companies. The owner-managed company is run by the fifth generation of the family. Supported by a network of research centres in France, Germany, Great Britain and the USA, THUASNE has own production facilities in Europe and the USA and branches all over the world.

This is what makes the company special: THUASNE is a global player with regional presence.

High quality. Individual. International. THUASNE.

Award-winning design in various product groups



THUASNE IN NUMBERS



2.100
employees worldwide



A footprint in
85 countries



14
industrial sites in Europe
and the USA



22,000
B2B customers



15 million
kilometres of thread



5,000 km
of fabric processed every year



Every
2 seconds,
a THUASNE product is bought
somewhere in the world

COMPETENCE AND PRODUCT RANGE: THUASNE BREAST CANCER AFTERCARE

The Facts

Breast cancer is the most common cancer among women worldwide. In Germany this means more than 70,000 new cases per year¹, i.e. one in eight women develops breast cancer in the course of her lifetime.

And the risk increases with age. Younger women are less susceptible to the disease, with the risk increasing from the age of 40 and especially 50, then decreasing again from the age of 70. On average, women are 64 years old when they are diagnosed with breast cancer.

In most cases, the chances of recovery are good if the cancer is discovered early enough and treated according to guidelines: The current 5-year survival rate is around 87%. Although more women develop breast cancer, the number of deaths is falling steadily.²

In Germany, there are around 280 breast centres certified by the German Cancer Society (DKG) and the German Society for Senology (DGS) where 97% of the women who received an initial diagnosis of breast carcinoma are treated. Nowadays 78% of women undergo breast-conserving surgery and less than one in three require complete removal of the breast (ablation, mastectomy).³

2-3 out of 10 women develop lymphoedema as a result of radiation treatment or removal of lymph nodes. This condition usually does not develop until weeks or years after the operation but can even occur 10-15 years later.⁴

¹ Robert Koch Institute (2016):
Report on Cancer in Germany 2016

² Cancer Society 2018

³ German Cancer Society & German Society
for Senology (2018): Key figures evaluation
2018. Annual report of the certified breast
cancer centres.

Audit year 2017 / key figures year 2016

⁴ Lymphfantastic.com [Online] [Quote from
09/21/2018]



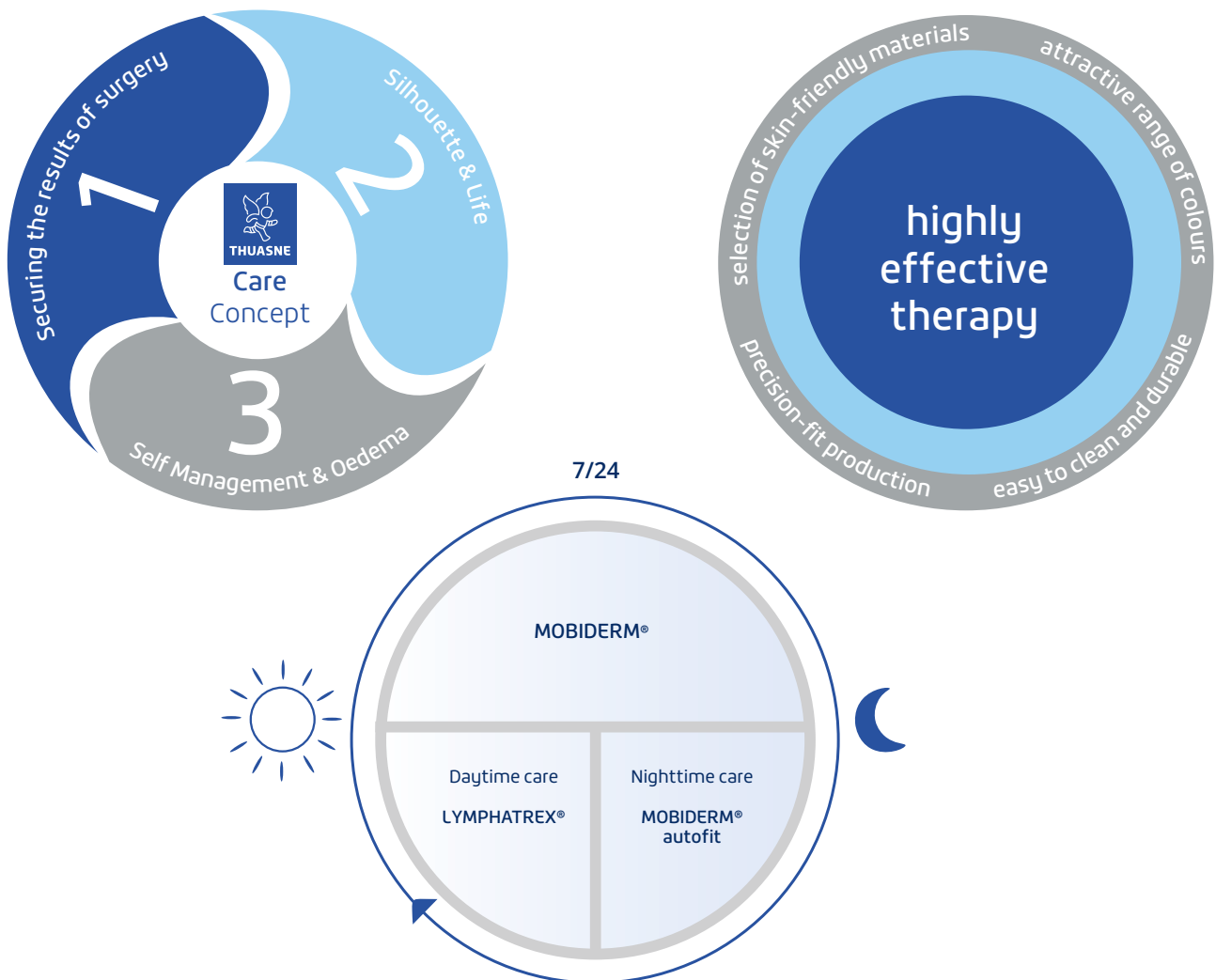
THUASNE CareConcept

Breast care and lymphology:

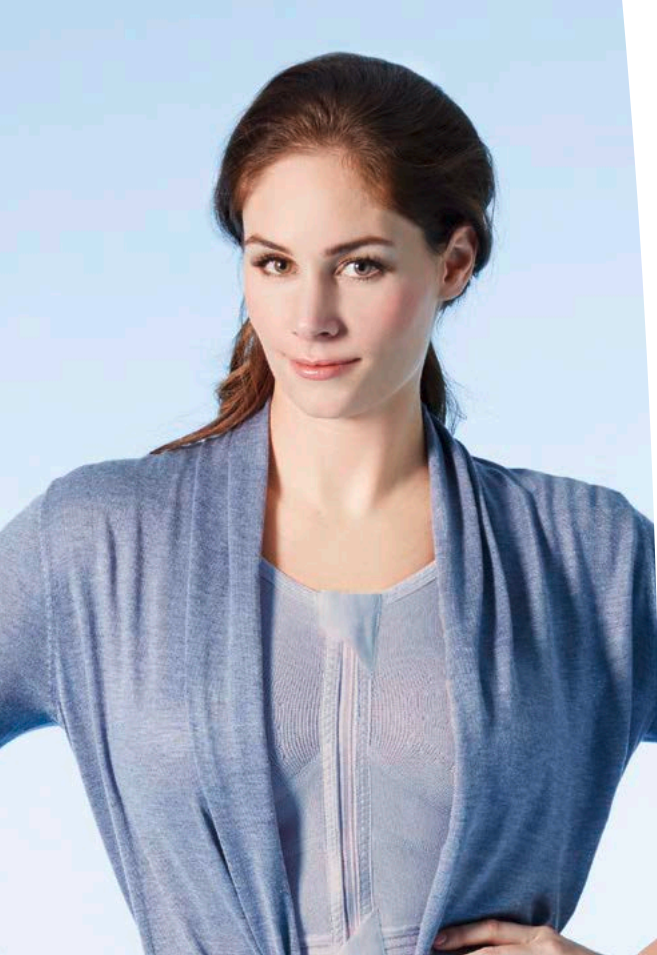
Breast care and lymphology: Synergy of core competencies for unique quality of care. Naturally by THUASNE.

The aftercare following a breast cancer diagnosis and possibly accompanying surgery must be assessed individually for each patient and depends on various factors. This includes scar healing, tendency to develop oedemas, etc.

THUASNE is committed to supporting this needed individual treatment approach. CareConcept is an innovative concept of optimally coordinated components with which a suitable therapy recommendation can be quickly and easily made at any stage of the disease: it is unique in light of the THUASNE product range, fully developed for the indication of breast cancer/oedema therapy and provides reliable assurance of first-class results.



Optimally adapted use of physical decongestion therapy



CICATREX® vest

1 For initial aftercare: Protection, therapy & prevention

CICATREX® / SILIMA®

CICATREX® compression clothing

Immediately after the operation, in addition to further cancer therapy such as radiation or chemotherapy, it is important to ensure an optimal result in terms of scar healing and shape. For both goals the magic word is: Compression. On the one hand, measured compression prevents the uncontrolled proliferation of scar tissue and the movement restrictions such proliferation can cause. On the other hand, targeted compression shapes and holds the breast (operated to preserve the breasts or rebuilt) and relieves postoperative swelling.

For this particular goal there are special compression products, e.g. bras like SILIMA® Cara or CICATREX® jackets. CICATREX® is custom-made with details specially adapted to the surgical result.



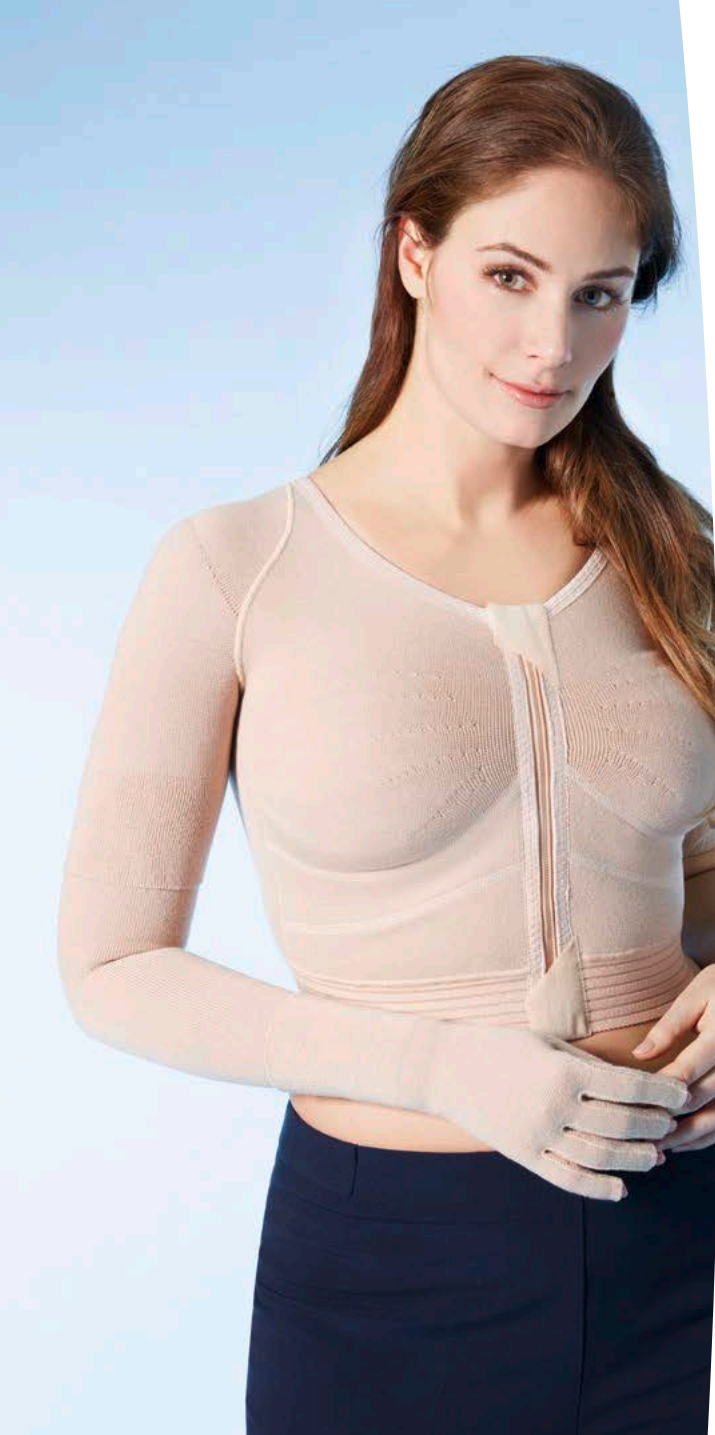
2 Regaining balance: Silhouette & life

SILIMA®

SILIMA® breast forms: Perfect compensation

After the wound has healed and the postoperative oedema has subsided, the patient receives her so-called permanent care with an optimally suitable breast form. Again: 100% tailored to the patient's personal situation.

With SILIMA® you have the choice between full and light breast forms, self-adhesive variants and more. Many women who have undergone breast preservation surgery like to use comparatively small compensating parts, for example, when volume deficits resulting from the operation require compensation or when radiation therapy has caused aesthetic consequences.



3 Self-management & oedema: Prevention and response

MOBIDERM®

The treatment is based on complex physical decongestive therapy (CDT) in which the oedematous tissue is decongested by manual lymph drainage. In order to maintain the reduction in circumference, bandages are applied immediately after decongestion. MOBIDERM® bandages are used for bandaging. They create a pressure difference between the contact surface of the integrated foam cubes and the adjacent environment, which leads to a tensile effect between the treated subcutaneous tissue areas. This not only maintains the result of manual lymph drainage, but also increases it. The materials used allow the greatest possible mobility while wearing the bandages and thus contribute to optimal therapy success with high patient compliance.

LYMPHATREX®

With decades of experience in the custom manufacturing of compression materials we ensure that our compression clothing fits perfectly. The materials fulfil the medical requirements (short-distension stretch), but also meet the wishes and demands of the patients: a classic choice of colours, pleasant slip-on and wearing properties as well as high wearing comfort, which comes with excellent stretching properties. They allow great freedom of movement despite the compression necessary for medical reasons. The LYMPHATREX® materials are suitable for everyday use, skin-friendly, ointment-resistant, breathable and hypoallergenic.



MOBIDERM® *autofit*

Patients use MOBIDERM® autofit to stabilize the results of CDT – even during night-time. Because it is important that the body is supported also during the maintenance phase. Used regularly, MOBIDERM® autofit prevents the dreaded rebound effect: the worsening of symptoms after decongestion. It optimally complements the daytime care with THUASNE compression products.

MOBIDERM® autofit is the comfortable solution for lymphoedema: easy to put on, comfortable to wear and without the need for extensive wrapping.



SILIMA® Lingerie



Meeting challenging requirements

Lingerie made by SILIMA® offers all the advantages your customers could wish for in a special-purpose bra. The design clearly focuses on maximum comfort. The superb quality of the materials used helps to regain the pleasure in feeling attractive and feminine. The key is simply to feel good: innovative and highly functional details ensure superb comfort for women of any age.

Security is a further secret of the bra collection's success. Sophisticated design and unique fit ensure that nothing can slip out of place. Materials are skin-friendly and double-layered in places to make them feel good and attractive.

The fashionable lingerie is presented in classical colours and designs: elaborate, classical or sporty – but always stylish. The selection of bras has a favourite for every customer and every situation.

A FEMININE APPEARANCE COUPLED WITH EXCLUSIVE FEATURES AND DETAILS

Soft padded adjustable straps
for individual fitting.

Higher soft edges
prevents breast form from slipping
while maintaining maximum arm mobility.

Close-fitting neckline
for perfect support thanks to the use
of stretch fabrics, prevents gaping.

Deep front panel
for secure fit and support.

Two deep cup-lining pockets
for insertion left or right.

**Wider and close-fitting
underbust banding**
for reassurance and enhanced
comfort, prevents constriction
in the trunk area.

Double-layered fabrics
for added hold and support
on both sides.





SILIMA® Lingerie

MEDICAL & SPORT

For the initial period after treatment: the perfect solution for all requirements

To ensure the best possible care and support immediately after breast surgery, SILIMA® has developed special-purpose bras to specifically provide the necessary post-operative care.

A compression bra supports the tissue and optimises the process of shaping the bust following breast reconstruction, reduction, lifting or conservative surgery. In addition controlled compression in the scar area and strain relief on the lymph drainage channels aids the healing process.

In conjunction with the particularly light initial care breast forms, the supple and soft initial care bras developed by SILIMA® create a natural appearance right after breast surgery, thus encouraging the healing process.

The highly practical, comparatively plain compression or initial care bras and the initial care breast forms are designed for temporary use and are only worn until the scar tissue has fully healed.



Cara △

- Compression bra following reconstructive or conservative breast surgery
- Moulded, double-layered cups for even compression without leaving an impression
- Wide straps, adjustable in three stages
- Front hook and zip fastening, softly lined
- Broad stretch band below the bust prevents cutting in and riding up

Art.-No. T57 2301

Sizes/Cup EUR (UK)

75 – 105 AA/A (34 – 46 AA/A)

70 – 105 B/C (32 – 46 B/C)

70 – 100 D/E (32 – 44 D/E)

105 D/E* (46 D/E)

110 – 120 AA/A*,

B/C* (48 – 52 AA/A, B/C)

Indications

Following any reconstructive breast surgery

Following segmental or quadrantresection

Fabric

54 % PA (polyamide), 33 % CO (cotton),

13 % EL (elastane)

Colours: Champagne, Black



* only available in black



Post-OP Belt

- Anatomically shaped post-op belt with hook-and-loop closure
- Secures the breast implant and prevents its upward migration
- The anatomical shape supports the compression effect
- Highly elastic and soft, made of breathable Combitec fabric
- Supplied without bra

Art.-No. T57 2313

Sizes/Circumference

(Measure under the armpits above the chest) S/86 – 92 cm, M/92 – 98 cm

L/98 – 108 cm, XL/108 – 118 cm

XXL/118 – 128 cm

Indications

Breast reconstruction after mastectomy

Breast augmentation with silicone implants

Following any reconstructive breast surgery

Fabric: 63 % PA (polyamide),

20 % PES (polyester), 17 % EL (elastane)

Colours: Champagne, Black



Lena ●

- Ideal care for smaller cup sizes
- Highly elastic, pleasantly soft fabric
- Infinitely adjustable hook-and-loop fastening at the front and on the shoulders
- Easy and comfortable to use
- Maximum comfort
- Double-layered cups with two deep pockets

Art.-No. T57 2351

Sizes

S Cup A, M Cup A

L Cup A, XL Cup A

Underbust measurement

S/70 – 80 cm/11,5 cm

M/80 – 90 cm/12,5 cm

L/90 – 100 cm/13,5 cm

XL/100 – 110 cm/14,5 cm

Fabric

49 % PA (polyamide)

39 % CO (cotton)

12 % EL (elastane)

Colour

White



- 2 deep pockets



Elena ●

- Post-operative care for larger cup sizes
- Highly elastic, comfortable microfibre
- Front fastening for easy use, ideal when arm movement is restricted
- Extra-wide support straps
- Three-fold adjustable hook fastening with soft backing on the shoulder
- Cups with two deep pockets

Art.-No. T57 2891

Sizes/Cup EUR (UK)

75 – 115 A – D (34 – 50 A – D)

Hooks & Eyes

7 rows: 75 – 85 A – D (34 – 38 A – D)

8 rows: 90 – 95 A – D (40 – 42 A – D)

9 rows: 100 – 105 A – D (44 – 46 A – D)

10 rows: 110 – 115 A – D (48 – 50 AA – D)

Fabric

76 % PES (polyester)

17 % CO (cotton)

5 % PA (micropolyamide)

2 % EL (elastane)

Colour

White



Sylvie sports bra* ●

- Functional and fashionable sports bra for firm support, minimises breast movement
- Cups made of fine microfibre, pleasantly comfortable
- Moulded pockets made of fine High Power jersey
- Flat, elastic seams and soft non slipping edges
- Breathable Climatex fabric in neckline, back, side and front panels

Art.-No. T57 4401

Sizes/Cup EUR (UK)

75 – 105 AA – D (34 – 46 AA – D)

Hooks & Eyes

3 rows: 75 – 105 AA – D (34 – 46 AA – D)

Fabric

37 % PES (polyester)

36 % PA (polyamide)

27 % EL (elastane)

Colour

Silver/White



*while stocks last

Fibrefill breast forms to temporarily restore appearance



- The best solution for sensitive scar areas, slow healing wounds and radiotherapy.
 - Available as a symmetric short oval or triangle with additional strap at the base for bra attachment.
 - Made of woven fabric with fibrefill filling
- If a woman who has undergone surgery feels all right and her scars are healing well, a silicone breast form can also be used straight away. Nevertheless, you should always show her an initial care breast form as well.

Initial care breast forms should be replaced as soon as possible with silicone forms. Some women do, however, find it hard to switch from a lightweight initial care breast form to a normal "heavy" silicone form. Please bear this in mind when giving advice.

Art.-No. T66 2272

Triangular, symmetric, with additional strap

Size 1 – 14

Art.-No. T66 2202

Short oval, symmetric

Size 0 – 11

Fabric

75% CO (cotton)

25% PES (polyester)



SILIMA® Lingerie

DAILY

The SILIMA® DAILY collection offers comfortable underwear for every occasion. Perfect companions throughout the day are popular allrounders: soft and inconspicuous, shaping and creating an ideal outline. The colour range is calm and suitable for all situations.

The collection is currently represented by our new, intentionally simple T-shirt bra Ella. Great fit, breathable materials and smart details – once on, you may not wish to take it off again. Our colour “nude” looks great on every skin colour and makes the bra practically invisible even under white clothing.



NEW
COLOUR

Anna ●

- Smooth-fitting T-shirt bra with graphic print
- Soft bra with moulded foam cup, ensures a smooth and even outline
- Smooth-fitting fabric with graphic print
- Side reinforcements for special support
- Adjustable straps with soft back
- Three-fold adjustable hook fastening, bigger sizes with wider fastenings

Art.-No. T57 4602

Sizes/Cup EUR (UK)

75 – 100 A – C (34 – 44 A – C)

75 – 95 D (34 – 42 D)

Hooks & Eyes

2 rows: 75 – 85 A – D (34 – 38 A – D)

3 rows: 90 – 100 A – C (40 – 44 A – C),

90 – 95 D (40 – 42 D)

Fabric

55 % PA (polyamide)

17 % PES (polyester)

17 % PUR (polyurethane)

11 % EL (elastane)

Colours

Black/Anthracite

Pearl/Silkgrey



Anna Slip*

Art.-No. T57 4691

Sizes: 38 – 46 (34– 42)

Colour: Pearl/Silkgrey

*while stocks last

Eve ●

- Moulded bra in shiny jacquard
- The Limited Stretch jacquard material has a lightweight appearance and provides excellent support at the sides
- Soft lace at the neckline
- Lightweight appearance thanks to the elastic, delicate Textronic lace at the back
- Moulded pocket lining made of very fine, elastic, breathable mesh
- Narrow adjustable straps with soft back, three-fold adjustable hook fastening

Art.-No. T57 4701

Sizes/Cup EUR (UK)

75 – 100 AA – C (34 – 44 AA – C)
75 – 95 D (34 – 42 -D)

Hooks & Eyes

2 rows: 75 – 85 AA – D
(34 – 38 AA – D)
3 rows: 90 – 95 AA – D
(40 – 42 AA – D)

Fabric

78 % PA (polyamide)
22 % EL (elastane)

Colour

Pearl



Carina* ●

- Moulded cotton bra with lace insert at the neckline
- Moulded pockets made of a very soft moisture wicking fabric
- Shiny satin ribbon in under bust and straps for a refined and sporty look
- Padded, wide and adjustable straps prevent digging in and provide extra comfort, even in large sizes

Art.-No. T57 5101

Sizes/Cup EUR (UK)

75 – 95 B – D (34 – 42 B – D)

Hooks & Eyes

2 rows: 75 – 85 B – D
(34 – 38 B – D)
3 rows: 90 – 95 B – D
(40 – 42 B – D)

Fabric

45 % PES (polyester)
35 % CO (cotton)
15% PA (polyamide)
5 % EL (elastane)

Colour

White



Lucy ●

- Close-fitting bra with seamless cups
- Outer fabric elastic single stretch jersey featuring a floral jacquard pattern, with stretch piping across the neckline, straps and back
- Reinforced side panels for firm support, even for larger busts

Art.-No. T57 3801

Sizes/Cup EUR (UK)

75 – 100 A, D (34 – 44 A, D)
75 – 105 B, C (34 – 46 B, C)
Poppy red not available
in 100 D (44 D)

Hooks & Eyes

3 rows: 75 – 100 A, D,
(34 – 44 A, D),
75 – 105 B, C (34 – 40 B, C)

Fabric

69 % PA (polyamide)
27 % EL (elastane)
4 % PES (polyester)

Colours

White*, Grey*, Nude*, Poppyred*, Black*





Ella ●

- T-shirt bra without wires that doesn't show even under tight clothing
- Seamless moulded soft foam cups for secure hold, excellent shaping and a perfect outline
- Soft moulded breast form pockets without seams
- Elastic, continuously adjustable straps, positioned in the middle to ensure good weight distribution
- Soft net lace insert in the front middle section for a more delicate appearance
- Matching decorative straps complete the great look
- Our new colour "nude" flatters the skin and encloses the body subtly – almost invisible – even under white clothing

Art.-No. T57 5401

Sizes/Cup EUR (UK)

75 – 95 AA (34 – 42 AA)

75 – 100 A – C (34 – 44 A – C)

75 – 95 D (34 – 42 D)

Hooks & Eyes

2 rows: 75 – 85 AA – D (34 – 38 AA – D)

3 rows: 90 – 100 AA – D (40 – 44 AA – D)

Fabric

40% PA (polyamide)

24 % PUR (polyurethane)

20 % EL (elastane)

16 % PES (polyester)

Colours

White, Nude



Julie ●

- Sporty microfibre T-shirt bra
- Moulded spacer cups
- Lightweight, elastic, close-fitting, breathable, shape-retaining
- Ensures an even outline, suitable for women who have undergone conservative breast surgery or mastectomies
- 2 moulded pockets
- Side reinforcements for firm support
- Single jacquard microfibre for assured comfort
- Soft straps, adjustable at the back

Julie Slip*

Art.-No. T57 4191
 Sizes: 36 - 46 (32 - 42)
 Colours: Taupe, Berry

Art.-No. T57 4101

Sizes/Cup EUR (UK)
 75 - 95 AA (34 - 42 AA), 70 - 90 A - C
 (32 - 40 A - C), 75 - 90 D (34 - 40 D)

Hooks & Eyes
 2 rows: 70/75 - 85 AA - B
 (32/34 - 38 AA - B),
 75 - 80 C - D (34 - 36 C - D)
 3 rows: 90 - 95 AA (40 - 42 AA),
 90 B (40 B),
 85 - 90 C - D (38 - 40 C - D)

Fabric
 78 % PES (polyester)
 15 % EL (elastane)
 7 % PA (polyamide)

Colours
 White, Taupe*, Berry*



Diana ●

- Classic design coupled with good support and coverage
- Two-section cup
- Decorative lace trim across the neckline adds elegant flair
- Made of smooth, soft microfibre
- Adjustable straps with soft shoulder padding

Art.-No. T57 2551

Sizes/Cup EUR (UK)
 70 - 105 A - B (32 - 46 A - B)
 75 - 105 C - D (34 - 46 C - D)

Hooks & Eyes
 2 rows: 70 - 85 A - B (32 - 38 A - B),
 75 - 80 C - D (34 - 36 C - D)
 3 rows: 90 - 105 A - B (40 - 46 A - B),
 85 - 105 C - D (38 - 46 C - D)

Fabric
 34 % PES (polyester)
 29 % PA (polyamide)
 21 % EL (elastane)
 16 % CO (cotton)

Colours
 White, Nude, Black



Alina* ▲

- Young and feminine look
- Wide cut neckline
- Narrow straps at the bottom, wider and padded shoulders
- Ideal under lightweight or transparent tops
- Delicate embroidery
- Soft microfibre

Art.-No. T57 2431

Sizes/Cup EUR (UK)
 80 - 95 AA (36 - 42 AA)
 70 - 95 A - B (32 - 42 A - B)
 75 - 95 C (34 - 42 C)

Hooks & Eyes
 2 rows: 80 - 95 AA, (36 - 42 AA)
 70 - 95 A - B (32 - 42 A - B),
 75 - 95 C (34 - 42 C)

Fabric
 59 % PES (polyester),
 31 % PA (polyamide - Tactel),
 6 % EL (elastane), 4 % CO (cotton)

Colour
 White





SILIMA® Lingerie

LACE

Lace lingerie by SILIMA® is absolutely feminine. Delicate and stylish lace emphasises curves in an elegant manner. The bras can be worn under classical as well as casual clothing.

Lace bras like our new Sophie look good even under slightly transparent materials. The combination of pretty details, comfortable fit and high-quality materials makes this model a must-have for every wardrobe. Nothing scratches, confines or pinches – a real feelgood bra.

Many varieties of lace bras are available, with sewn cups or seamless moulded foam or spacer cups.

NEW
COLOUR

Eve Lace ●

- Classy T-shirt bra in shiny jacquard
- Ensures a smooth and even outline
- Lightweight appearance thanks to the elastic, delicate Textronic lace at the back
- Moulded pocket lining made of very fine, elastic, breathable mesh
- The Limited Stretch jacquard material has a lightweight appearance and provides excellent support at the sides
- Soft lace inserts at the neckline in accordance with the fashion trend
=> High Apex
- Narrow adjustable, padded straps with soft back, three-fold adjustable hook fastening

Art.-No. T57 4801

Sizes/Cup EUR (UK)

75 - 100 A - C (34 - 44 A - C)

75 - 95 D (34 - 42 D)

Hooks & Eyes

2 rows: 75 - 85 A - D (34 - 38 A - D)

3 rows: 90 - 95 A - D (40 - 42 A - D),

100 A - C (44 A - C)

Fabric

41 % PA (polyamide)

28 % PUR (polyurethane)

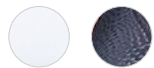
19 % PES (polyester)

12% EL (elastane)

Colours

Pearl,

Nightblue/Black



Eve Lace Slip*

Art.-No. T57 4891

Sizes: 38 - 46 (34 - 42)

Colour:

Nightblue/Black



*while stocks last



Lola ●

- Elegant bra with sophisticated details
- Soft wireless bra with new modern look
- Use of new feminine jacquardtronic lace with three-dimensional embroidery
- White model has white rather than skin-coloured pockets
- Optimized cut

Art.-No. T57 2583

Sizes/Cup EUR (UK)

75 – 105 A – C (32 – 46 A – C)
75 – 100 D (32 – 44 D)
75 – 95 E (32 – 42 E)

Hooks & Eyes

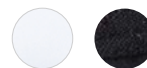
2 rows: 75 – 85 A – B (32 – 38 A – B),
75 – 80 C – E (32 – 36 C – E)
3 rows: 90 – 105 A – B (40 – 46 A – B),
85 – 105 C (38 – 46 C), 85 – 100 D
(38 – 44 D), 85 – 95 E (38 – 42 E)

Fabric

White: 72 % PA (polyamide)
24 % EL (elastane), 4 % CO (cotton)
Black: 77 % PA (polyamide)
23 % EL (elastane)

Colours

White, Black



Annabelle ●

- Elegant T-shirt bra with lace application
- Soft bra with moulded foam cup, ensures a smooth and even outline
- Lightweight appearance thanks to elastic Textronic lace on bar and back - side reinforcements for special support
- Feminine look due to exquisite embroidery in the strap area
- Adjustable straps with soft back
- Three-fold adjustable hook fastening

Art.-No. T57 4503

Sizes/Cup EUR (UK)

75 – 100 A – C (34 – 44 A – C)
75 – 95 D (34 – 42 D)

Hooks & Eyes

2 rows:
75 – 85 A – D (34 – 38 A – D)
3 rows:
90 – 100 A – C (40 – 44 A – C)
90 – 95 D (40 – 42 D)

Fabric

52 % PA (polyamide)
16 % PES (polyester)
13 % EL (elastane)
16 % PUR (polyurethane)

Colour

Aquamarine



Annabelle Slip*

Art.-No. T57 4591

Sizes: 36 – 46 (32 – 42)

Colour: Aquamarine

Sophie ●

- Soft comfortable wireless bra, making any irregularities become invisible
- Super-soft seamless moulded cups made of 3D spacer material with high breathability; light, elastic and fast drying
- Cups adapt to the contour gently without being bulky: reinforcement through sickle-shaped lining improves shape and hold
- Embroidered net lace at neckline, underbust and back for a fashionable, delicately feminine effect
- Elastic, continuously adjustable straps are soft and split in two at the front

Art.-No. T57 5201

Sizes/Cup EUR (UK)

75 - 100 AA (34 - 44 AA)

70 - 100 A - B (32 - 44 A - B)

70 - 90 C (32 - 40 C)

75 - 90 D (34 - 40 D)

Hooks & Eyes

2 rows:

75 - 85 AA (34 - 38 AA)

70 - 85 A - B (32 - 38 A - B)

70 - 85 C (32 - 38 C)

75 - 85 D (34 - 38 D)

3 rows:

90 - 100 AA (40 - 44 AA)

90 - 100 A - B (40 - 44 A - B)

90 C (40 C), 90 D (40 D)

Fabric

62 % PES (polyester)

28 % PA (polyamide)

10 % EL (elastane)

Colours

White, Black



- 2 deep pockets



Flora ●

- For a sublime and feminine look
- Supple, stretch floral lace, fully lined
- Soft shoulder padding, adjustable straps

- Neckline insert for extra security and camisole effect
- Art.-No. T64 2071

Art.-No. T57 2081

Sizes/Cup EUR (UK)

70 - 95 AA - C (32 - 42 AA - C)
70 - 90 D (32 - 40 D)

Hooks & Eyes

2 rows:

70 - 85 AA - B (32 - 38 A - C)
70 - 80 C - D (32 - 36 C - D)

3 rows:

90 - 95 AA - B (40 - 42 AA),
85 - 95 C (38 - 42 C)
85 - 90 D (38 - 40 D)

Fabric

75 % PA (polyamide)

19 % EL (elastane)

6 % CO (cotton)

Colours

White, Champagne, Black



Bianca ●

- Feminine bra designed especially for the smaller bust
- Padded cups ensure a smooth and even outline
- Particularly comfortable
- Slightly wider, adjustable straps with soft lining
- Beautiful top fabric detail adds a touch of elegance

Art.-No. T57 2691

Sizes/Cup EUR (UK)

70 - 95 AA - B
(32 - 42 AA - B)

Hooks & Eyes

2 rows:

70 - 95 AA - B
(32 - 42 AA - B)

Fabric

60 % PA (polyamide)

18 % PES (polyester)

12 % CO (cotton)

10 % EL (elastane)

Colour

White





SILIMA® Lingerie

SUPPORT

Active, mobile, spontaneous. What provides support in every situation? A SILIMA® support bra. A well-fitting bra can improve the entire appearance of a woman. Relief bras in the SILIMA® Support collection are fashionable and comfortable companions. Perfectly fitting bras offer the necessary support at all times. Nothing cuts in and the back is relieved.





Soft Comfort ●

- Soft relief bra with net lace trim, wireless for perfect hold and optimal adaptation to the shape of the breast
- Super-soft seamless moulded cups made of 3D spacer material with high breathability; light, elastic and fast drying
- Seamless moulded cups cover irregularities without being bulky; side sickle-shaped reinforcements provide extra hold
- Upper cup with elastic panel in fashionable embroidered net lace and delicate little neckline bow
- Soft, broad and anatomically shaped underbust band
- Wider, continuously adjustable and padded straps
- Our colour "nude" flatters the skin and encloses the body subtly

Art.-No. T57 5301

Sizes/Cup EUR (UK)

75 – 105 B – E (34 – 46 B – E)

Hooks & Eyes

2 rows: 75 – 85 B – E (34 – 38 B – E)

3 rows: 90 – 105 B – E (40 – 46 B – E)

Fabric

44 % PA (polyamide)

29 % EL (elastane)

27 % PES (polyester)

Colours

White, Nude



Balanced Support ●

- Soft wireless modern bra featuring colour-matching jacquardtronic lace with 3-dimensional embroidery
- Broad, padded and adjustable straps as well as anatomically shaped underbust band
- Cotton-rich pockets for optimal moisture exchange
- Higher cut, two-section cup and double interlock for best fit, relief and hold

Art.-No. T57 1462

Sizes/Cup EUR (UK)

80 – 110 B – E (36 – 48 B – E)

80 – 105 F (36 – 46 F)

Hooks & Eyes

3 rows: 80 – 90 B – F (36 – 40 B – F)

4 rows: 80 – 110 B – F (36 – 48 B – F)

Fabric

39 % PA (polyamide), 25 % CO (cotton),
19 % PES (polyester), 17 % EL (elastane),

Colours: White, Black



Galant back fastening

- Short-line bra with clever details
- Two-section cup
- Stretch lace
- Optimal support for a heavy bust, suitable for ladies suffering from shoulder-arm syndrome and/or lymphoedema
- Reinforced underbust support
- Particularly wide, softly padded straps, not adjustable

Art.-No. T57 1541

Sizes/Cup EUR (UK)

80 – 100 A (36 – 44 A)

75 – 115 B – D (34 – 50 B – D)

85 – 115 E (38 – 50 E)

Hooks & Eyes

5 rows: 75 – 95 A – E (34 – 42 A – E)

6 rows: 100 – 115 A – E (44 – 50 A – E)

Fabric 71 % PA (polyamide),
27 % EL (elastane), 2 % CV (viscose)

Colours: White, Nude, Black



△ With 1 pocket provided



Galant front fastening

- Short-line bra with clever details
- Two-section cup
- Stretch lace
- Optimal support for a heavy bust, suitable for ladies suffering from shoulder-arm syndrome and/or lymphoedema
- Reinforced underbust support
- Particularly wide, softly padded straps, not adjustable

Art.-No. T57 1551

Sizes/Cup EUR (UK)

75 – 100 A (34 – 44 A),

75 – 115 B – C (34 – 50 B – C),

85 – 115 D – E (38 – 50 D – E)

Hooks & Eyes: 6 rows: 75 A – C (34 A – C)

7 rows: 80 – 90 A – C (36 – 40 A – C);

8 rows: 80 – 90 D – E (36 – 40 D – E),

95 – 105 A – C (42 – 46 A – C)

9 rows: 95 – 105 D – E (42 – 46 D – E),

110 – 115 A – C (48 – 50 A – C)

10 rows: 110 – 115 D – E (48 – 50 D – E)

Fabric: 71 % PA (polyamide),
27 % EL (elastane), 2 % CV (viscose)

Colours: White, Nude, Black



△ With 1 pocket provided



Comfort △

- Long-line bra with convenient front fastening
- Two-section cup
- For women with a larger bust following bilateral surgery
- Optimal support for a heavy bust, suitable for ladies suffering from shoulder-arm syndrome or lymphoedema in the chest, shoulder and arm
- Optimal support for a heavy bust, suitable for ladies suffering from shoulder-arm syndrome or lymphoedema in the chest, shoulder and arm
- Does not ride up
- Reinforced underbust support
- Skilful accentuation of front and back neckline with flattering, elastic lace

Art.-No. T57 1651

Sizes/Cup EUR (UK)

80 – 120 B – D (36 – 52 B – D)

90 – 120 E (40 – 52 E)

Hooks & Eyes

13 rows: 80 – 105 B – C (36 – 46 B – C)

14 rows: 80 – 105 D – E (36 – 46 D – E)

110 – 120 B – C (48 – 52 B – C)

15 rows: 110 – 120 D – E (48 – 52 D – E)

Fabric: 66 % PA (polyamide),
32 % EL (elastane), 2 % CV (viscose)

Colours: White, Nude, Black





SILIMA®

BREAST FORMS

Natural wellbeing

When you recommend SILIMA® breast forms to your customers, you are recommending carefully tested quality made in Germany. THUASNE has been manufacturing its products carefully by hand and using the very latest technology in Burgwedel in Lower Saxony for more than 45 years. A continuous improvement process ensures that SILIMA® breast forms keep pace with the care needs of women who have undergone breast surgery. For example, regular developments of new and innovative products in different shapes and designs respond to advances in surgery techniques.

The SILIMA® brand stands for a feeling of natural wellbeing. Women who have undergone breast surgery particularly appreciate the pleasant silkiness of the breast forms, which feel gentle on their skin.

Worn with a SILIMA® bra, these breast forms always create an aesthetic and harmonious entity. The feminine body image is recreated: personalised and right down to the last detail. This confidence helps your customers regain their zest for life and thus plays a key role in both the physical and mental healing process.

Different sizes and versions are available to ensure the best possible solution for each personal situation.

The SILIMA® process

SILIMA® has developed a special processing technique for adjusting the elasticity of the silicone to assure the natural quality of SILIMA® breast forms made of soft, yet at the same time textured and extremely tear-proof, silicone. High-elasticity, gossamer-thin polyurethane (PU) film encases the soft silicone body of the SILIMA® breast forms like a skin and prevents the molecules from escaping to the surface. The film is extremely tear-proof, which further enhances the durability of the breast form. Furthermore, the PU film and silicone join to form a single unit, which ensures very natural movement.

Skin friendly and gentle

The polyurethane film is elastic, resistant to chlorine and salt water, and heat conducting, which allows the breast form to adopt body temperature when worn.

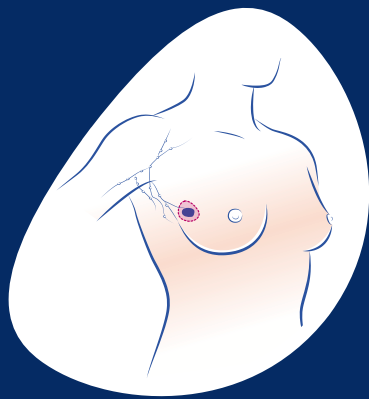
The film is not just skin friendly: it also feels natural. And thanks to a special matt finish, it even resembles the appearance of skin very closely

A natural beige tone, together with two different shades of brown are available to match the respective skin colour, thus making sure the breast form looks quite natural, even under flimsy clothing.



SILIMA® – quality that lives up to its promise

The introduction of a quality management system and certification of the same in accordance with ISO 13485 and ISO 9001 ensure the consistently high quality of SILIMA® breast forms, from development, through production, right up to despatch. After all, we want nothing more than to satisfy you and your customers.



CARE FOLLOWING CONSERVATIVE SURGERY

Perfect compensation and flawless contour

SILIMA® partial breast forms restore the natural symmetric contour of the bust following conservative breast surgery or extensive oncoplastic surgery with resulting aesthetic deficits.

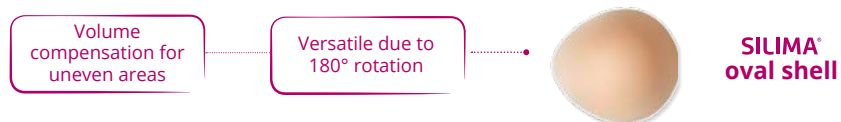
Nowadays, some 80 percent of all patients do not need to undergo mastectomy. Conservative breast surgery is the standard approach to treating malignant breast cancer these days. Conservative therapy, or even elaborate breast reconstruction procedures, however, sometimes only result in partial recovery, or are unaesthetic. These changes are only rarely detectable immediately after surgery. They usually only occur once post-operative radiotherapy has been given. Given the preceding radiation therapy, surgical correction only rarely produces the desired result. Moreover, it entails the use of stressful reconstruction techniques.

The gentle alternative

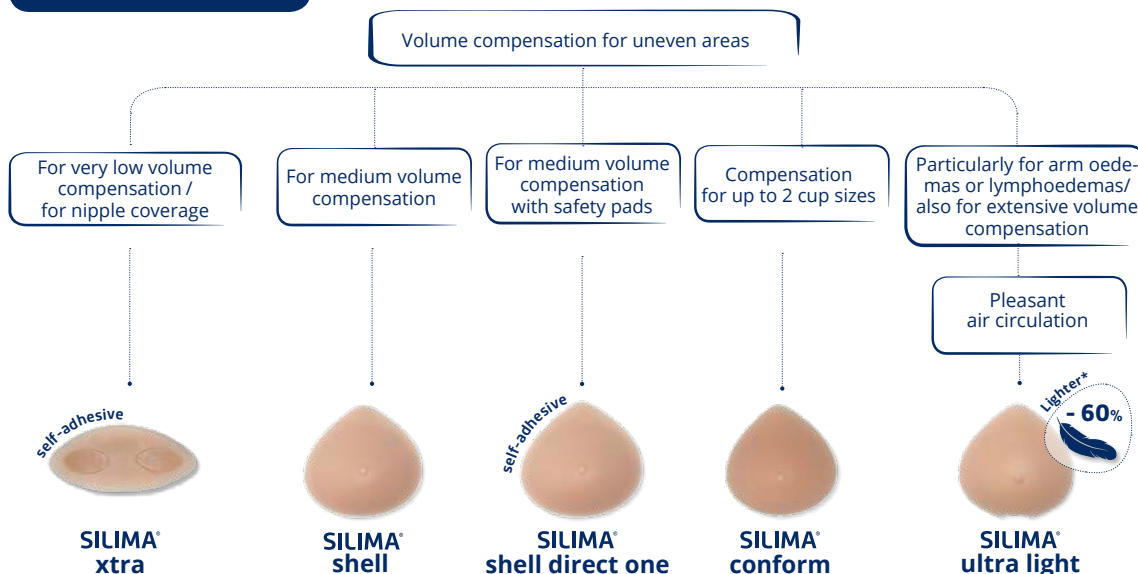
If the result of conservative or oncoplastic surgery is aesthetically unsatisfactory, SILIMA® partial breast forms can reproduce a natural, symmetric bust contour. Equally, if surgery entails several operations, they can serve as an interim solution.

SILIMA® partial forms come in various sizes, shapes and thicknesses, allowing you to offer your customers a perfect fit that is superbly comfortable and guarantees maximum freedom of movement, in any situation.

Basic



Premium



SILIMA® xtra



- Perfect hold on the skin and in a bra
- Whether placed beneath the breast or at the side, these soft partial forms create a perfect appearance following conservative breast surgery or when the two breast sizes differ
- A lack of tissue or volume in the upper part of the breast is compensated by the push-up effect from below or from the side. The smaller sizes are ideal for replenishing volume around the tip, e.g. following breast reconstruction
- The special, medically tested adhesive pads ensure that SILIMA® xtra stays firmly in place in a bra and is not visible. The adhesive pads can be worn over longer periods, and new pads purchased, if necessary. As such, SILIMA® xtra is very durable as an adhesive breast compensation solution
- The gradually tapering edges and soft material nestle gently and naturally against the breast without any visible transitions
- The matt outer film enhances the natural appearance
- SILIMA® xtra can be worn left or right in any well-fitting bra
- SILIMA® xtra comes complete with adhesive pads and cleaning accessories. The individual components can be reordered separately

Art.-No. T66 1071
 Sizes 1 – 4



Adhesive pads with cleaning board
 Art.-No. T64 107

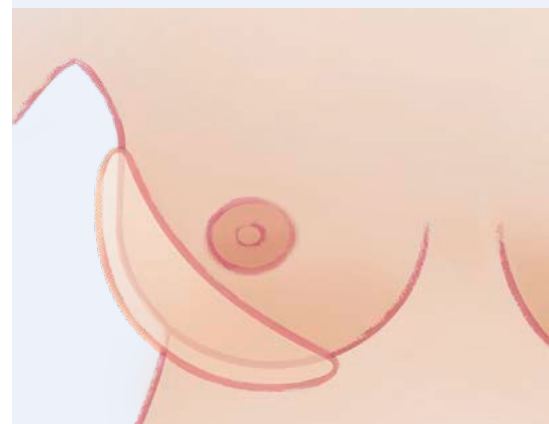
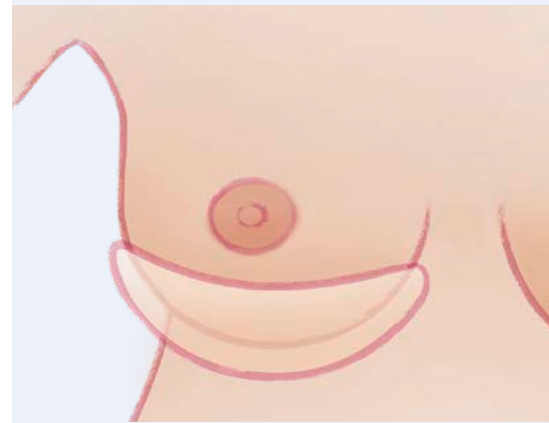


Special brush
 Art.-No. T13 301

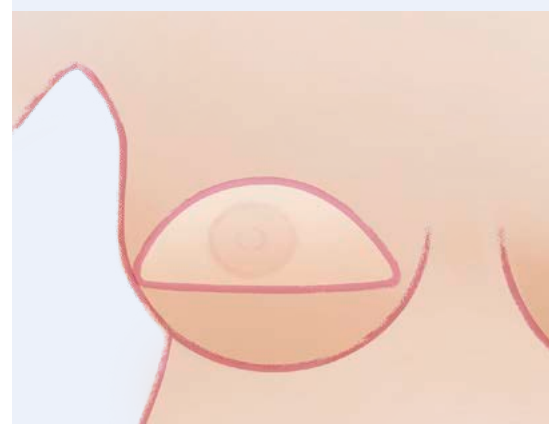


Cleaning lotion
 Art.-No. T83 3772

Illustrations SILIMA® xtra

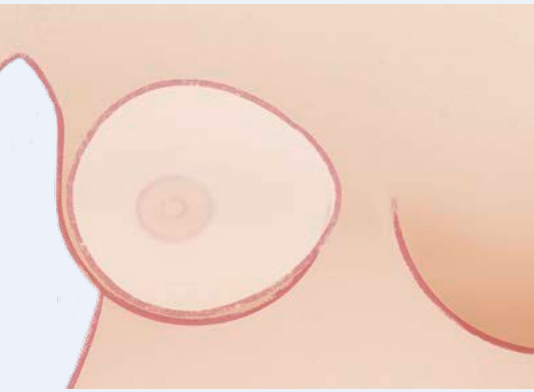


Positioning SILIMA xtra underneath or at the outer edge supports or lifts the breast, thus restoring its customary appearance.



Size 1 or 2 can compensate volume deficits at the tip of the breast; can be combined with a self-adhesive nipple.

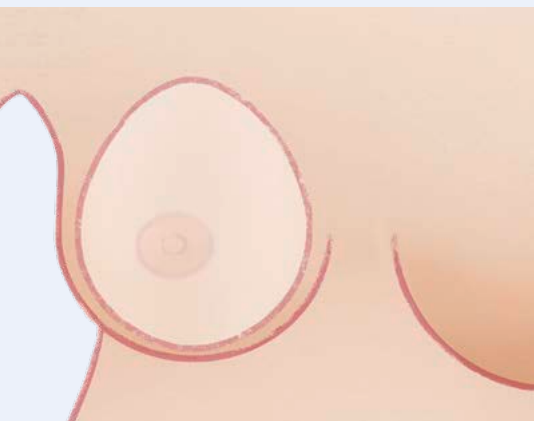
Illustrations SILIMA® oval shell



Volume deficits in the lower breast can be compensated and the breast lifted, thus restoring the natural contour/appearance.



Can be rotated 180° for use on either side.



Changing the position also compensates volume deficits in the middle and upper breast.

Oval shape for use on either side. Can be rotated 90° to the left or right for use as shown in the two upper illustrations.

SILIMA® oval shell



- For a close-fitting, natural silhouette
- A shortage of volume in the upper part of the breast is compensated by the push-up effect from below or from the side. For volume deficits in the lower breast area or at the tip, e.g. following reconstruction
- Anatomical, oval shape
- The gradually tapering edges and soft material nestle gently and naturally against the breast without any visible transitions

- Velvety, matt outer film enhances the natural appearance
- Best worn directly on the skin

Art.-No. T66 1101

Cup/sizes

Standard/B, 2/3, 4/5, 6/7, 8/9, 10/11

SILIMA® shell direct one



- Secure positioning with just one adhesive strip
- The ultra-thin adhesive strip unobtrusively sticks to the back of the form
- The one-piece adhesive strip makes the form even easier to handle and clean and even more secure to wear
- Symmetric shape that adapts to the natural female form
- Gently tapering edges for a natural transition
- Can be held by a well-fitting bra
- SILIMA® shell direct one comes complete with adhesive strip and cleaning accessories. The individual components can be reordered separately

Art.-No. T66 3872

Cup/sizes

Standard/B 1 – 11

Full/C 3 – 11

Description

self-adhesive, anatomical, symmetric

Adhesive strips

Size 1: Form sizes 1 and 2

Size 2: Form sizes 3 and 4

Size 3: Form sizes 5 and 6

Size 4: Form sizes 7 and 8

Size 5: Form sizes 9 and 10

Size 6: Form size 11

SILIMA® shell



- For a smooth and even outline
- Worn directly on the skin
- Flat, natural transition where the bra straps join, the outer edges nestle softly and gently against the skin
- Anatomical, symmetric shape, mirrors the curvature of the chest wall
- Restores the natural appearance

Art.-No. T66 3802

Cup/sizes
Standard/B 1 – 11
Full/C 3 – 12

Description
anatomical, symmetric

Illustrations SILIMA® shell and SILIMA® shell direct one

Gently tapered at the edges for natural transition

Matt outer skin

B-Cup

C-Cup

Available standard or full cup to optimise the required volume. The full cup offers more volume around the outside and is about 1 cm fuller.

SILIMA® conform



- A particularly aesthetic soft and smooth fitting form
- Ideal for sensitive scar tissue and suitable for initial care
- The standard cup has a deep hollow on the underside, making it particularly good for moderate loss of tissue
- The full cup has a shallower hollow, offering more volume to compensate greater loss of tissue
- Velvety matt outer skin
- Particularly soft inner layer made of transparent silicone
- Thin, softly tapering edge for smooth transition
- Best worn directly on the skin

Art.-No. T66 3901

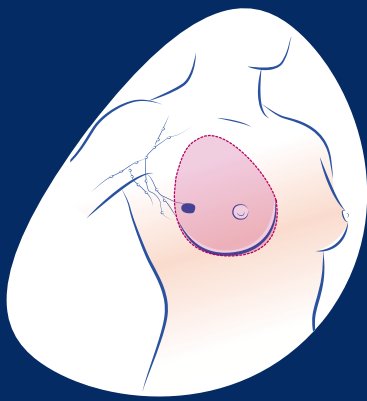
Cup/sizes
Standard/B:
2/3, 4/5, 6/7, 8/9, 10/11
Full/C:
4/5, 6/7, 8/9, 10/11

Description
anatomical, symmetric
2-layered

Illustrations SILIMA® conform

SILIMA® conform Standard-Cup

SILIMA® conform Full-Cup



POST-MASTECTOMY CARE

Individuality for a natural appearance

The development of SILIMA® breast forms reflects current surgery methods and compensation requirements resulting in a wide variety of forms and versions to ensure the best possible solution for your customers.

For minimum/no underarm tissue deficit:



SILIMA® breast forms without lateral extension (symmetric)

A less severe mastectomy removes the mammary tissue and some lymph nodes around the bust, while leaving the pectoral muscle and other lymph nodes. This procedure results in no, or only minimal, loss of underarm tissue. In this case, a SILIMA® breast form without a prominent lateral extension is the best solution.

Basic

Complete volume compensation/
full weight

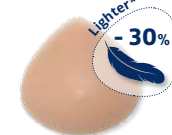
For larger tissue volumes



SILIMA® classic symmetric

Complete volume compensation/
reduced weight

For very active women



SILIMA® light symmetric

Premium

Complete volume compensation/
reduced weight

Relief and increased wearing comfort

Particularly recommended for arm oedemas or lymphoedemas

For very sensitive scar tissue

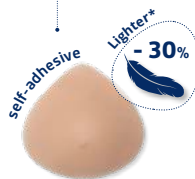
2 in 1 concept, especially for arm and thoracic oedema

Especially for large bust sizes

Pleasant air circulation

Especially for pressure-sensitive skin

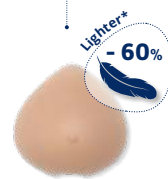
Especially soft and supple



SILIMA® direct



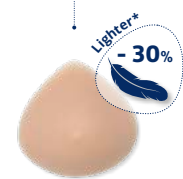
SILIMA® elite



SILIMA® ultra light



SILIMA® soft & light super soft



SILIMA® soft & light symmetric

SILIMA® soft & light



- So soft – so natural
- Softly rounded, natural form
- As soft as a natural breast
- Wide choice of cups for best possible compensation of moderate and fuller busts

Art.-No. T66 3782
UK Name: SILIMA® elegance clear

Cup/sizes
 Standard/B 1 – 11
 Full/C 3 – 14

Description
 anatomical, symmetric
 3-layered

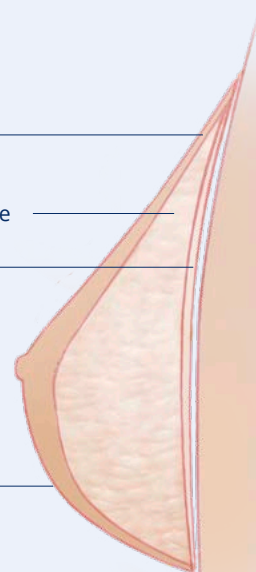
Illustration SILIMA® soft & light

Silky soft
 outer film

Lightweight silicone

Transparent,
 soft inner layer

Particularly
 soft silicone gel



SILIMA® soft & light super soft



- Natural and particularly smooth-fitting
- Super soft cup nestles closely in the bra cup and thus resembles even more to particularly soft breast tissue
- Adapts to fit the thoracic wall with ease, ideally suited for sensitive scar tissue
- For an optimum weight compensation 15 % lighter than the remaining breast due to the soft silicone core
- Adapts naturally to all body movements, whether standing, sitting or lying down
- Lightweight silicone core encased in particularly soft silicone

Art.-No. T66 3791
UK Name: SILIMA® optima

Cup/sizes
 Standard A/B 1 – 11

Description
 anatomical, symmetric
 3-layered

Illustration SILIMA® soft & light super soft

Silky soft
 outer film

Transparent,
 soft inner layer

Lightweight
 silicone

Particularly
 soft silicone gel

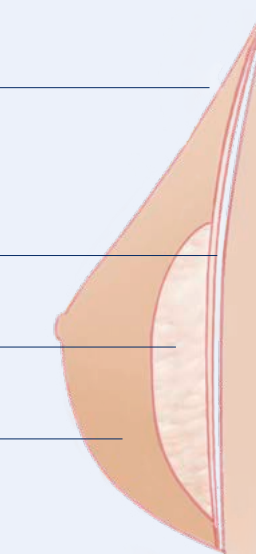


Illustration SILIMA® ultra light

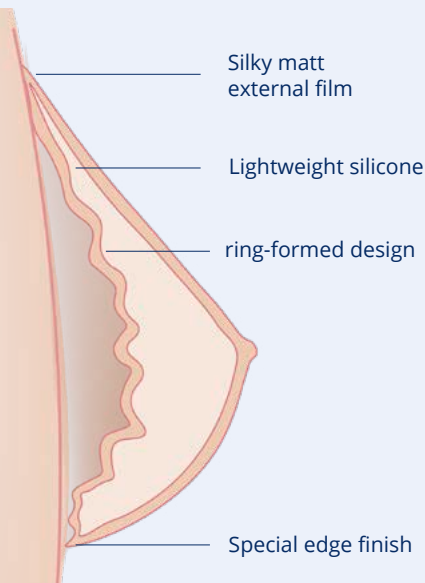
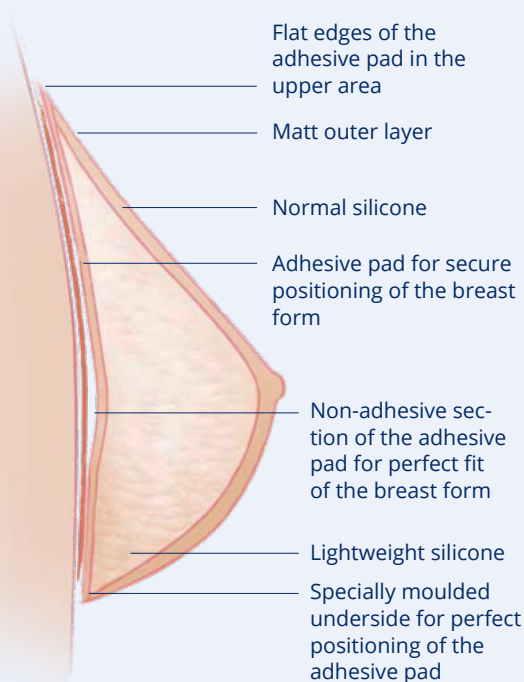


Illustration SILIMA® direct



SILIMA® ultra light



- Perfect compensation that feels weightless
- 2-layer breast form
- Weighs up to 60 % less than conventional gel forms thanks to the use of special lightweight silicone
- Unique ring-formed design guarantees stability as well as natural movement
- Deeply hollowed underside to protect the sensitive scar area
- Underside edge finish ensures good air circulation. Water drains off easily when swimming
- Anatomical, symmetric shape

- Particularly suitable for patients with lymphoedema
- A good solution even if considerable amounts of tissue are removed during conservative surgery

Art.-No. T66 3741

Cup/sizes

Standard/B 1 – 11
Full/C 3 – 14

Description

anatomical, symmetric
2-layered

SILIMA® direct



Rear view
with
adhesive pad

- Versatile breast form with excellent adhesion for close and secure fitting
- SILIMA® direct comes with a thin, soft and supple, yet shape-retaining adhesive pad
- Perfectly comfortable with adhesive pad. SILIMA® direct can also be worn as a non-adhesive breast form
- Specially moulded underside for perfect positioning of the adhesive pad
- The adhesive pad is not visible
- When worn daily, the adhesive pad only needs to be cleaned once or twice a week
- Anatomically and symmetrically designed for natural movement

- Matt outer skin that resembles natural breast skin
- Adapts to the body reliably and without changing shape

Art.-No. T66 3772

Cup/sizes

Standard/B 1 – 11
Full/C 3 – 12

Description

anatomical, symmetric
3-layered

SILIMA® direct comes complete with adhesive pad and cleaning accessories. The individual components can be reordered separately.

SILIMA® light



- Ideal for women with lymphoedema or a larger bust, or for particularly active women
- Three-layer breast form
- Depending on size and cup, up to 30 % lighter than standard silicone forms
- Special lightweight silicone core encased in standard silicone
- Natural movement
- Mirrors the natural curvature of the chest wall
- Flat natural transition where the straps join and at the edges

- Gentle, crease-free fit
- For patients without underarm tissue loss, and for slender women

Art.-No. T66 3751

UK Name: SILIMA® triform light

Cup/sizes

Standard/B 3 – 11

Full/C 3 – 14

Description

anatomical, symmetric

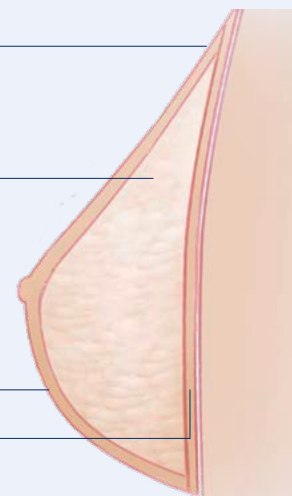
3-layered

Illustration SILIMA® light

Silky matt external film

Lightweight silicone

Standard silicone gel



SILIMA® elite



- Natural compensation for women with a large bust
- Reduced weight for enhanced comfort
- Extra-full cup volume within a small cup area
- Silky-soft surface
- Anatomical shape
- Adapts to the widest range of very individual needs
- Can be worn left and right

Art.-No. T66 3981

Cup/sizes

Extra Full/D/E 8/9, 10/11, 12/13, 14/15

Size chart international (imperial)

D-Cup 90/95 (40/42): 8 – 10

D-Cup 100 – 120 (44 – 52): 12 – 14

E-Cup 80 – 95 (36 – 42): 8 – 10

E-Cup 100 – 120 (44 – 52): 12 – 14

F- and G-Cup 75 – 95 (34 – 42): 8 – 10

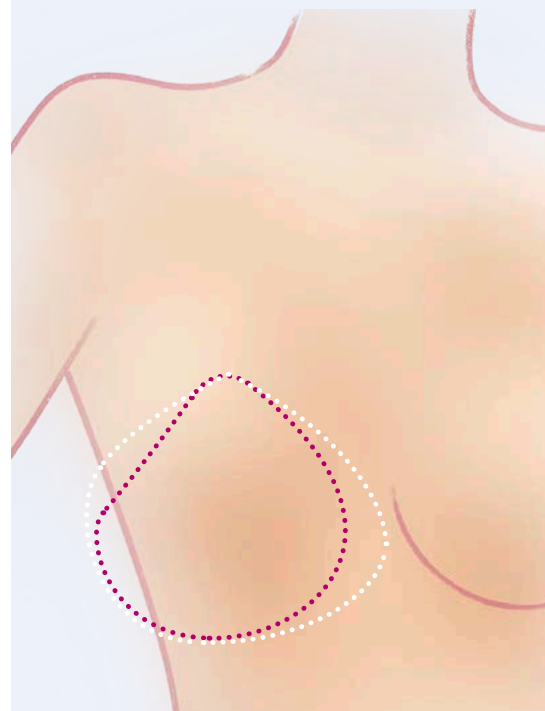
F- and G-Cup 100 – 120 (44 – 52): 12 – 14

Description

anatomical, symmetric

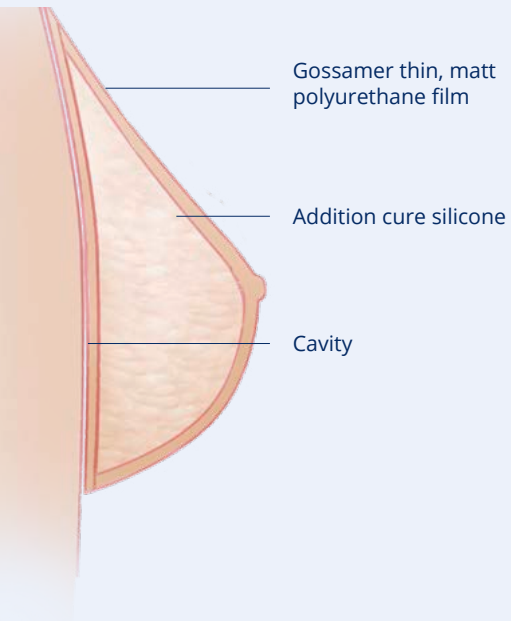
3-layered

Illustration SILIMA® elite



SILIMA® elite provides a large cup volume despite the smaller area (pink line) compared with previous solutions (white line)

Illustration SILIMA® classic,
symmetric



SILIMA® classic symmetric



- Tried and trusted solution for restoring a natural appearance
- Anatomical shape, mirrors the natural curvature of the chest wall
- Nestles closely in the bra cup without creasing
- For patients without underarm tissue loss, and for slim women

Art.-No. T66 3701
UK Name: SILIMA® triform classic
Cup/sizes
Standard/B 1 – 11, Full/C 3 – 14
Description
anatomical, symmetric
1-layered

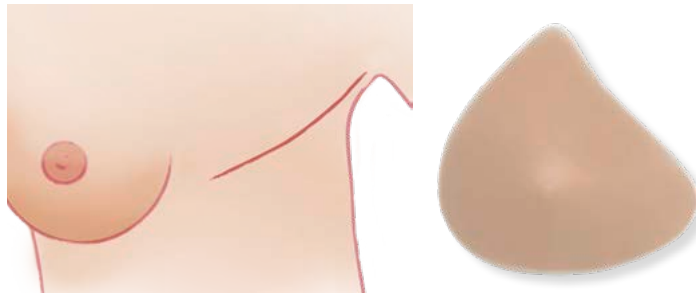


TREATMENT AFTER RADICALLY MODIFIED MASTECTOMY

For underarm tissue deficit:

SILIMA® breast forms with lateral extension (asymmetric)

A modified radical mastectomy removes not just the mammary gland and fatty tissue, but also the lymph nodes, resulting in a noticeable loss of underarm tissue. A SILIMA® breast form with extension, i.e. that tapers at the sides under the arms, provides the best fit in such instances. This holds especially true for women with a fuller figure. By contrast, a form without extension may be more suitable for slim women, even if they have suffered tissue loss down the side.



Basic



Premium

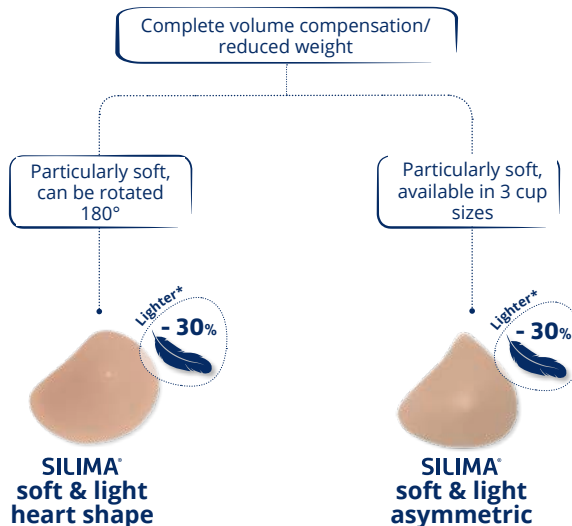
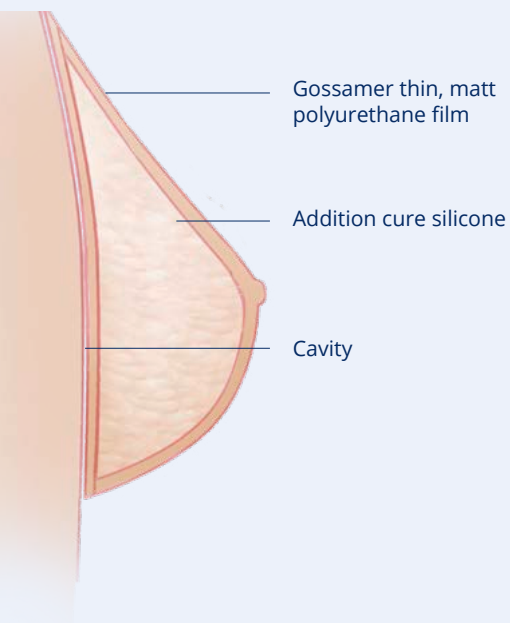


Illustration SILIMA® classic, asymmetric



SILIMA® classic asymmetric



- The same as the symmetric version, except:
- Elongated at the sides to compensate underarm tissue loss
- Ideal for uneven scars or immediately following surgery thanks to the shallow hollow on the underside
- Wide tapering at the sides for guaranteed non-slip hold in a bra
- Wide, moulded bottom edge: supports the form against the body and ensures firm hold when worn directly against the skin
- Flat natural transition where the straps join and under the arms
- Flat upper breast, especially cup A

Art.-No. T66 3601

UK Name: SILIMA® contura classic

Cup/sizes

A 1 – 7

Standard/B 1 – 10

Full/C 5 – 12

Description

anatomical, asymmetric
1-layered

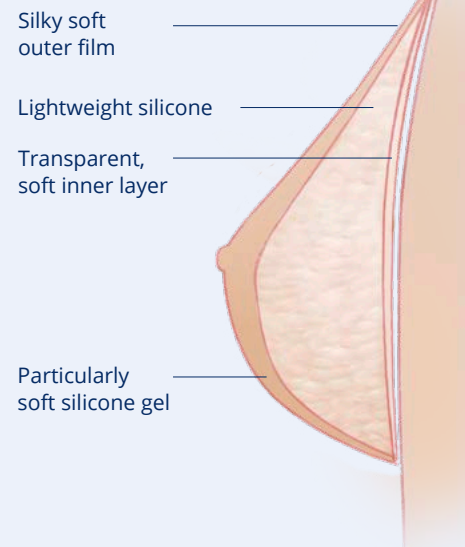
SILIMA® soft & light asymmetric



- Three-layer design for enhanced comfort
- Up to 30 % lighter than conventional gel forms
- Cup available in three sizes
- As soft as a natural breast
- The asymmetric shape with tapered sides ensures a perfect fit when underarm tissue has been lost as a result of removing lymph nodes

Art.-No. T66 3682
UK Name: SILIMA® discreetly
Cup/sizes
 A 3 – 7, Standard/B 3 – 10
 Full/C 5 – 12
Description
 anatomical, symmetric
 3-layered

Illustration SILIMA® soft & light



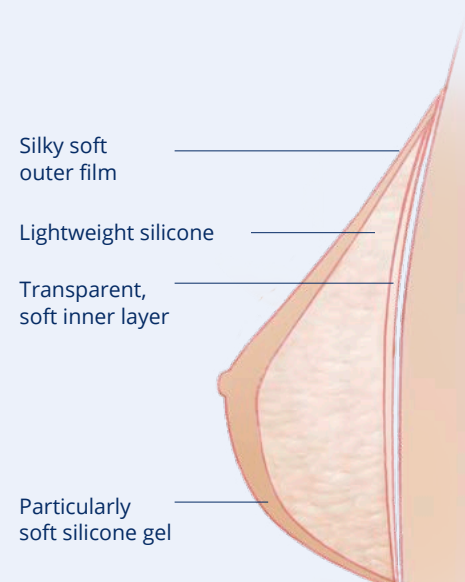
SILIMA® soft & light heart shape



- Three-layer design for enhanced comfort
- Lightweight silicone core with naturally soft cup and silky-soft inner layer
- Up to 30 % lighter than conventional gel forms
- Adapts to fit the thoracic wall with ease, ideally suited for sensitive scar tissue
- Even looks lightweight, thanks to the transparent inner layer
- Adapts naturally to all body movements, whether standing, sitting or lying down
- Symmetric shape, adapts to become asymmetric
- Gently tapers to the neckline and underarm area
- The curve fills the lower breast area particularly well and stops the form from rubbing against the remaining natural breast

Art.-No. T66 3281
UK Name: SILIMA® embrace
Cup/sizes
 Standard/B 1 – 8
 Full/C 5 – 12
Description
 anatomical, symmetric
 3-layered

Illustration SILIMA® soft & light heart shape





SILIMA®

SWIMWEAR

Fashionable and confident on the beach

Summer, sun, leisure – your customers will look good at the beach or pool in SILIMA® swimwear. The wide range offers something for everyone. The attractive styles are tailored to the specific needs of your customers – ideally fit for purpose and fashionable at the same time. The swimsuits are extremely comfortable and guarantee reliably secure hold, when both sunbathing and swimming.

You will find the current collection in our special swimwear catalogue.

Higher neckline for secure fit
and reliable scar concealment.
The top of the breast and the form
cannot be seen.

Cut higher under the arm
to enhance the comfort of
the swimsuit.

Deep incorporated pocket
holds the breast form securely
in place and prevents it falling
or floating out.

**All swimsuits with soft
lined cups** that adapt naturally.

Higher back for better strap hold.

Lycra tulle corsage
flatters the figure and
provides support.

Porto Santo

Art.-No. T59 500
Cup B / C / D 38 – 52 (UK 32 – 44)

Fabric:
78 % PA, 22 % EL

COLLECTION 2020 – WHILE STOCKS LAST



Sumatra

Art.-No. T59 506
 Cup A / B / C 38 – 52 (UK 32 – 46)
 Cup D 40 – 46 (UK 34 – 40)
Fabric: 80 % PA,
 20 % EL/Lycra Xtra Life



Arcachon

Art.-No. T59 511
 Cup B 36 – 46 (UK 30 – 40)
 Cup C 36 – 44 (UK 30 – 38)
Fabric: 71 % PA Microf.,
 29 % EL/Lycra Xtra Life Sensitive



Deauville

Art.-No. T59 512
 Cup A 46 – 50 (UK 40 – 44), Cup B 36 – 50 (UK 30 – 44)
 Cup C 40 – 50 (UK 34 – 44), Cup D 42 – 44 (UK 36 – 38)
Fabric: 71 % PA Microf.,
 29 % EL/Lycra Xtra Life Sensitive



Honolulu

Art.-No. T59 513
 Cup A / B / C 40 – 56 (UK 34 – 50)
 Cup D 40 – 48 (UK 34 – 42)
Fabric: 81 % PA,
 19 % EL/Lycra



Maui Tankini

Art.-No. T59 514
 Cup A 42 – 44 (UK 36 – 38)
 Cup B / C 38 – 50 (UK 32 – 44)
 Cup D 38 – 44 (UK 32 – 38)
Fabric: Print: 81 % PA, 19 % EL/Lycra,
 Uni: 80 % PA, 20 % EL/Lycra



Madeira

Art.-No. T59 499
 Cup B / C / D 38 – 52 (UK 32 – 46)
Fabric: 78 % PA,
 22 % EL



Valencia

Art.-No. T59 501
 Cup B 38 – 50 (UK 32 – 44)
 Cup C 38 – 48 (UK 32 – 42)
Fabric: 80 % PA,
 20 % EL/Lycra Xtra Life



Sydney Bikini

Art.-No. T59 519
 Cup A 38 – 42 (UK 32 – 36)
 Cup B / C 36 – 44 (UK 30 – 38)
Fabric: 71 % PA,
 29 % EL/Lycra Xtra Life



Acapulco

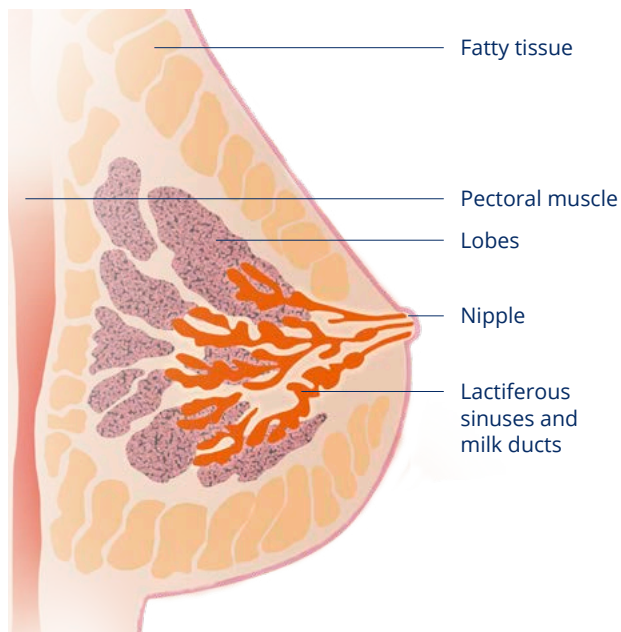
Art.-No. T59 522
 Cup A / B / C / D 38 – 48 (UK 32 – 42)
Fabric: Print: 72 % PA Microf.,
 28 % EL/Lycra, Uni: 71 % PA Microf.,
 29 % EL/Lycra Xtra Life Sensitive

WHAT YOU SHOULD KNOW ABOUT BREAST CANCER

Malignant breast tumours are the most frequent form of cancer among women in Europe. Every fourth cancer diagnosed among women afflicts the breast. From the age of 40, the risk of cancer gradually increases. It is estimated that in the year 2000 there were 350,000 new breast cancer cases in Europe, while the mortality was estimated at 130,000 (European Network of Cancer Registries – ENCR, Cancer Fact Sheets, 2002). In order to understand why the restoration of physical appearance is so important for the mental stabilisation of women who have undergone breast surgery and thus for their return to leading a normal life, it helps to understand the structure of the female breast, how breast cancer occurs, and how it is treated.

Structure and function of the female breast

The term “breast” describes the milkproducing gland whose primary function is to feed newborn babies. The medical descriptive term is Mamma.



The term breast describes the milk-producing mammary gland. The surrounding fatty and connecting tissue gives the breast its shape and softness.

The glandular tissue is arranged around the nipple, virtually in a star shape. It consists of milk-secreting lobules (Lobula) arranged in groups and the so-called milk ducts (Ductuli), which run, like paths, towards the nipple and to the outside, some 15 to each nipple. The lobules and ducts are embedded in fatty and connective tissue that gives the breast its shape and softness. A breast does not have any muscles, but lies on the major and minor pectoral muscles. A network of nerves, blood vessels and lymph channels supplies nutrients and hormones to the breast tissue.

Most of the lymph channels – consisting of lymphatic vessels and lymph nodes – run towards the armpit, with a few leading towards the breastbone and collarbone. Normally, lymph nodes are pea sized, at most, soft and virtually impossible to feel.

Inflammations, but also malignant illnesses, can cause them to swell and harden. But just because you can feel a node does not necessarily mean it is malignant. More than three quarters are benign, and frequently indicate mastopathy, i.e. an accumulation of connecting tissue, or cysts filled with fluid.

How breast cancer develops

In the case of malignant tumours, the tumour cells reproduce unhindered, destroy the surrounding tissue, and can be transported along the blood and lymph channels to other parts of the body where they can start forming metastases.

Malignant tumours in the breast (breast cancer) start in the surface (epithelial) cells of the milk ducts, although some also form in the lobes.

If the tumour has not penetrated the cell walls, the basal membrane of the gland tissue, it is referred to as a carcinoma in situ, contained at its location of occurrence. At such an early, non-invasive stage, the chances of curing the cancer by surgically removing the tumour are good. Once the tumour cells have penetrated the basal membrane and started growing in the surrounding connecting and fatty tissue, they become what is known in medicine as an invasive tumour – breast cancer.

Cancer is caused by changes in the genetic material of body cells that result in dysfunctional growth. Why a healthy cell mutates into a cancer cell is, however, still largely unresearched, although statistics do permit the derivation of specific risk factors. Accordingly, women face a higher risk of contracting breast cancer

- if their close relatives had breast cancer,
- if they are older than 50,
- if they have formerly suffered from breast cancer,
- if they have problematic mastopathy,
- if numerous microcalcifications are detected by mammography, or
- if tissue samples indicate a higher risk of cellular degeneration.

THE VARIOUS TYPES OF SURGERY FOR BREAST CANCER

There are various options for surgically removing breast carcinoma these days: radical, modified radical or simple mastectomies, or conservative breast surgery. The latter include quadrantectomy, tumorectomy or segmental mastectomy.

Conservative breast surgery

Nowadays, most breast cancer patients can undergo conservative breast surgery. The ratio of tumour size to overall mammary tissue plays a key role in determining whether conservative surgery is possible.

In order to indicate the area of change in the mammary gland, the breast is roughly divided up into four quadrants. Most malignant tumours are found in the outer, upper quadrants, i.e. between collarbone and armpit. A quadrant resection removes both the tumour and – to be on the safe side – the tissue in that quadrant. This type of surgery does, however, frequently produce a cosmetic result that is less than ideal. A tumorectomy or segmental mastectomy removes the tumour and surrounding tissue to a “safe” distance of about two centimetres to healthy tissue. This safe distance around the tumour aims to include any cells that might have invaded the surrounding tissue.

As a rule, some lymph nodes are also removed from the armpit during conservative breast surgery to enable exact diagnostics. The operation usually leaves only small, scarcely visible scars. Conservative breast therapy is often followed by radiotherapy.

Mastectomy

A radical mastectomy removes the entire mammary gland including the associated pectoral muscles and lymph nodes. The cut stretches from around the shoulder joint down to the abdomen. The chest usually takes on a very concave shape as a result.

This radical approach to breast surgery was very common, especially in the 1970s. Nowadays, modified radical mastectomies remove the entire mammary gland, together with the associated lymph nodes in the armpits. The pectoral muscles are left, or only removed if also tumour-ridden. A simple mastectomy removes the entire gland tissue but leaves the axillary lymph nodes.

ADJUVANT THERAPIES

Various therapies are available to supplement or support breast cancer treatment. These include, for example, radiotherapy and/or medication, such as chemotherapy or hormone therapy.

Radiotherapy

Radiotherapy may be administered both before and after breast surgery. Pre-operative radiotherapy aims to stop or reverse tumour growth. Post-operative therapy aims to destroy any remaining cancer cells in the breast or scar area to prevent a relapse. Computer tomography is used to individually calculate the right dosage of radiation and area to be treated. This helps to reduce the possible side effects, such as burns. Nevertheless, the affected skin area remains extremely sensitive for the duration of the radiotherapy – which usually lasts five to six weeks.

Chemotherapy

Cytostatic chemotherapy aims to hinder cell division and destroy cells, thus preventing the formation of metastases. It is used, for example, when other forms of treatment – such as radiotherapy or hormone therapy – are insufficient, and the tumour cells are already spreading through the body. Unfortunately, besides destroying cancer cells, chemotherapy also damages healthy, quickly dividing cells, such as are found in the roots of our hair or the gastrointestinal tract. It can therefore cause side effects such as hair loss, nausea and vomiting. These side

effects can be controlled by individually combining the compounds with medication to stop nausea and vomiting. Like radiotherapy, chemotherapy can be administered both before and after surgery.

Hormone therapy

Some breast tumours are hormone receptor positive, i.e. caused by the influence of hormones such as oestrogen. Following surgery, patients with such tumours can receive hormone treatment to combat the body's production of the hormones.

Breast reconstruction options

An increasingly important part of the recovery process following cancer-related mammary loss is the restoration of appearance using a breast form or through breast reconstruction. Various methods and techniques are available for breast reconstruction – using either silicone or saline breast implants, or tissue taken from elsewhere on the body. This tissue is either taken from the large back muscle, or the lower abdominal area.

CARE AND CLEANING



How to look after breast forms

SILIMA® breast forms are high-quality products – pleasantly silky and skin friendly. Perspiration can, however, impair the positive material properties of SILIMA® breast forms. So please make sure your customers understand the need to clean their breast forms every day to ensure lasting elasticity and strength. SILIMA® breast forms are so easy to care for that cleaning them takes barely a minute. Show your customers how to treat and clean the breast forms properly. They will thank you for it. After all, silicone breast forms that are damaged by incorrect handling cannot be repaired.

What your customers need to know about SILIMA® breast form care and cleaning:

- Wash with mild soap and rinse in warm water
- Do not use solvents under any circumstances
- Dab gently with a soft towel to dry
- Do not place the form on a radiator, nor use a hair dryer
- Use the original box to store or move the breast form
- Keep sharp or pointed objects, such as brooches, away from the breast form
- Be careful with pet claws – they might damage the gossamer-thin PU film
- Observe the care information included with each breast form



ACCESSOIRES / SERVICE

Art.-No.			Description
T64 3642	Breast form cover	T66 3601, T66 3682	Colour: skin
T64 3742	Breast form cover	T66 3701, T66 3751, T66 3782	Colour: skin
T64 1541 symmetric T57 999	Bra pocket Pocket sewing	T57 1541, T57 1551, T57 1651	Colours: white · skin · black
T64 107	SILIMA® xtra adhesive pads	One size fits all	Set of 2, incl. cleaning board
T64 3872	SILIMA® shell direct one adhesive strips	1 – 6	Adhesive on both sides
T64 3772	SILIMA® direct adhesive strips	1 – 12	Adhesive on both sides
T83 3772	SILIMA® cleansing lotion	45 ml	For adhesive pads
T13 301	SILIMA® special brush	One size fits all	For adhesive pads

SILIMA® Nipples

For a perfectly natural appearance

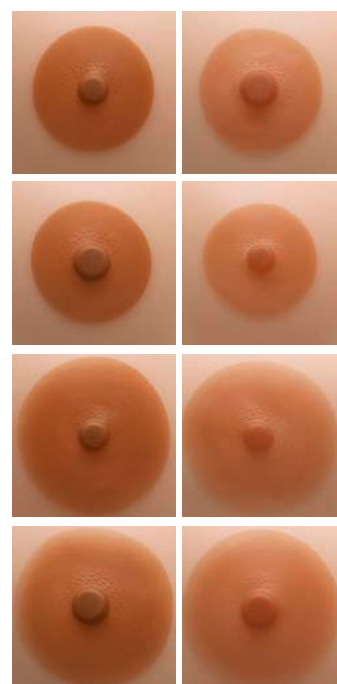
A completely natural and feminine appearance down to the last detail: self-adhesive SILIMA® nipples make your SILIMA® breast form look even more natural. It is impossible to see the difference, even when wearing semi-transparent clothing. The extensive range of SILIMA® nipples ensures individual adaptation to the natural nipple. For a perfectly natural-looking bust. Even after conservative or reconstructive breast surgery. The nipple can even be worn directly on the skin.

- Range of colours and sizes
- Skin-friendly
- Easy to handle
- Repeatedly self-adhesive
- Adhesive layer can be cleaned and re-activated
- Available in packs of one or two or as an 8-piece starter and demo set for the fitting

Art.-No. T83 1251

Description: Pack of 8 nipples: 8 x 1 of each nipples

Colours	Ø Artificial Nipple	Ø Nipple	Art.-No. Packs of one	Art.-No. Packs of two
Light	40 mm	9 mm	83 127 RB 00940	83 127 RB 0094002
Light	40 mm	12 mm	83 127 RB 01240	83 127 RB 0124002
Dark	40 mm	9 mm	83 127 SB 00940	83 127 SB 0094002
Dark	40 mm	12 mm	83 127 SB 01240	83 127 SB 0124002
Light	52 mm	9 mm	83 128 RB 00952	83 128 RB 0095202
Light	52 mm	12 mm	83 128 RB 01252	83 128 RB 0125202
Dark	52 mm	9 mm	83 128 SB 00952	83 128 SB 0095202
Dark	52 mm	12 mm	83 128 SB 01252	83 128 SB 0125202



HOW TO MEASURE AND FIT CORRECTLY

Customers should wear a well-fitting bra when being measured:

- The underbust edge of the bra should not cut in
- The cups should not constrict the bust and should enclose it fully at the sides and neckline

1. Finding the right bra size

First measure the circumference under the bust. Match the measurement to the correct bra size in Table I.

Example: 79 cm measured = Bra size 80

2. Finding the right cup size

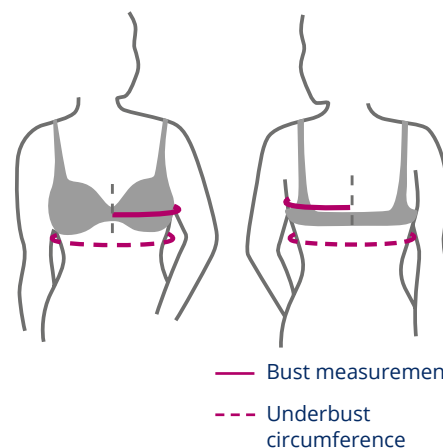
Measure from the middle of the back (spine) across the fullest part of the remaining breast to the breastbone. Then double the measurement. Starting from the bra size identified in Table I, track down to Table II, where you can find the right cup size on the left-hand side, based on your measurement.

Example: 47 cm measured, doubled = 94 cm. If the bra size is 80, the cup size – according to Table II – is B.

Once you have the right bra and cup sizes, you can determine the breast form size using the SILIMA® size table on the next page.

3. Finding the right breast form size

Starting from the measured cup size, track horizontally to the right to the measured bra size. In the vertical



column beneath this measurement, you will find the appropriate breast form size.

Example: A measured cup B and bra size 80 equates to a breast form cup B, size 5.

During selection, please bear in mind that most SILIMA® breast forms come in at least 2, and in some cases 3, cup sizes to ensure the best possible fit.

SILIMA® breast forms ...

- ... cup A: for a small, flat bust
- ... standard/cup B: for the medium-sized bust
- ... full/cup C: for the fuller bust
- ... cup D/E: for a large bust

Table I: Underbust circumference in cm

63-67	68-72	73-77	78-82	83-87	88-92	93-97	98-102	103-107	108-112	113-117	118-122
-------	-------	-------	-------	-------	-------	-------	--------	---------	---------	---------	---------

International bra size

65	70	75	80	85	90	95	100	105	110	115	120
----	----	----	----	----	----	----	-----	-----	-----	-----	-----

Imperial bra size

30	32	34	36	38	40	42	44	46	48	50	52
----	----	----	----	----	----	----	----	----	----	----	----

Table II: The right cup size is derived from the bust measurement in cm

AA	75-77	80-82	85-87	90-92	95-97	100-102	105-107	110-112	115-117	120-122	125-127	130-132
A	77-79	82-84	87-89	92-94	97-99	102-104	107-109	112-114	117-119	122-124	127-129	132-134
B	79-81	84-86	89-91	94-96	99-101	104-106	109-111	114-116	119-121	124-126	129-131	134-136
C	81-83	86-88	91-93	96-98	101-103	106-108	111-113	116-118	121-123	126-128	131-133	136-138
D	83-85	88-90	93-95	98-100	103-105	108-110	113-115	118-120	123-125	128-130	133-135	138-140
E	85-87	90-92	95-97	100-102	105-107	110-112	115-117	120-122	125-127	130-132	135-137	140-142
F	87-89	92-94	97-99	102-104	107-109	112-114	117-119	122-124	127-129	132-134	137-139	142-144
G	89-91	94-96	99-101	104-106	109-111	114-116	119-121	124-126	129-131	134-136	139-141	144-146

SILIMA® SIZE TABLE

Matching bra size to the right breast form size

AA	65	70	75	80	85	90	95	100	105	110	115	120						
A	60	65	70	75	80	85	90	95	100	105	110	115	120					
B			65	70	75	80	85	90	95	100	105	110	115	120				
C				65	70	75	80	85	90	95	100	105	110	115	120			
D					65	70	75	80	85	90	95	100	105	110	115	120		
E						65	70	75	80	85	90	95	100	105	110	115		

SILIMA® soft & light, super soft, extra soft lightweight form

symmetric: Art.-No. T66 3791	A/B-Cup	1	2	3	4	5	6	7	8	9	10	11						
------------------------------	---------	---	---	---	---	---	---	---	---	---	----	----	--	--	--	--	--	--

SILIMA® soft & light, extra soft lightweight form

symmetric: Art.-No. T66 3281	B-Cup	1	2	3	4	5	6	7	8									
	C-Cup						5	6	7	8	9	10	11	12				
symmetric: Art.-No. T66 3782	B-Cup	1	2	3	4	5	6	7	8	9	10	11						
	C-Cup				3	4	5	6	7	8	9	10	11	12	13	14		
symmetric: Art.-No. T66 3682	A-Cup		3	4	5	6	7											
	B-Cup			3	4	5	6	7	8	9	10							
	C-Cup						5	6	7	8	9	10	11	12				

SILIMA® elite, D/E-Cup

symmetric: Art.-No. T66 3981	Sizes 8/9, 10/11, 12/13, 14/15 (Detailed size table see page 42)																	
------------------------------	--	--	--	--	--	--	--	--	--	--	--	--	--	--	--	--	--	--

SILIMA® direct, lightweight adhesive form

symmetric: Art.-No. T66 3772	B-Cup	1	2	3	4	5	6	7	8	9	10	11						
	C-Cup				3	4	5	6	7	8	9	10	11	12				

SILIMA® ultra light, extra lightweight form

symmetric: Art.-No. T66 3741	B-Cup	1	2	3	4	5	6	7	8	9	10	11						
	C-Cup				3	4	5	6	7	8	9	10	11	12	13	14		

SILIMA® light, lightweight form

symmetric: Art.-No. T66 375	B-Cup			3	4	5	6	7	8	9	10	11						
	C-Cup				3	4	5	6	7	8	9	10	11	12	13	14		

SILIMA® classic, standard gel form

symmetric: Art.-No. T66 3701	B-Cup	1	2	3	4	5	6	7	8	9	10	11						
	C-Cup				3	4	5	6	7	8	9	10	11	12	13	14		
asymmetric: Art.-No. T66 3601	A-Cup	1	2	3	4	5	6	7										
	B-Cup	1	2	3	4	5	6	7	8	9	10							
	C-Cup						5	6	7	8	9	10	11	12				

SILIMA® xtra, partial form with adhesive pads

Art.-No. T66 1071	Größen 1 – 4
-------------------	--------------

SILIMA® oval shell

Art.-No. T66 1101	B-Cup	2/3	2/3	2/3	4/5	4/5	6/7	6/7	8/9	8/9	10/11	10/11						
-------------------	-------	-----	-----	-----	-----	-----	-----	-----	-----	-----	-------	-------	--	--	--	--	--	--

SILIMA® shell direct one, self-adhesive shell form

symmetric: Art.-No. T66 3872	B-Cup	1	2	3	4	5	6	7	8	9	10	11						
	C-Cup				3	4	5	6	7	8	9	10	11					

SILIMA® shell, shell form

symmetric: Art.-No. T66 3802	B-Cup	1	2	3	4	5	6	7	8	9	10	11						
	C-Cup				3	4	5	6	7	8	9	10	11	12				

SILIMA® conform, ultra-soft partial form

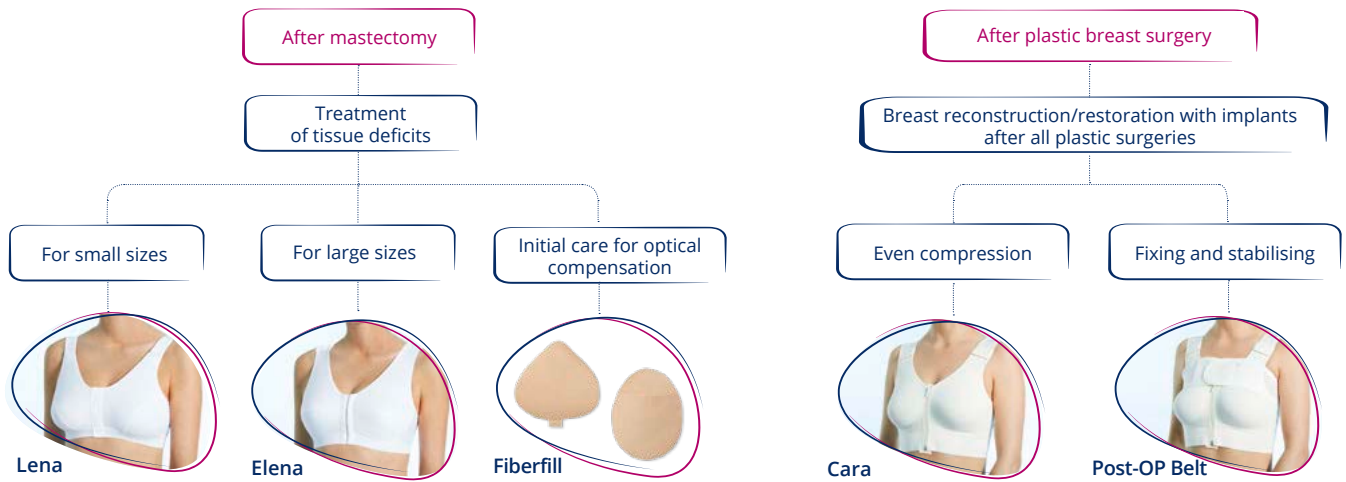
symmetric: Art.-No. T66 3901	B-Cup	2/3	2/3	2/3	4/5	4/5	6/7	6/7	8/9	8/9	10/11	10/11						
	C-Cup					4/5	4/5	6/7	6/7	8/9	8/9	10/11	10/11					

This SILIMA® size table is for orientation purposes only. To ensure the best possible fit, please always have different sizes and cup sizes of the breast forms – especially SILIMA® soft & light, SILIMA® ultra light and SILIMA® elite – to hand.

SILIMA® BRA OVERVIEW

Postoperative Phase/Medical

Starting on page 12



Daily

Starting on page 15



Lace

Starting on page 20



Support

Starting on page 25



Support & protect



Sylvie

Name	Item No.	Sizes/Cup
Lena <i>P. 13</i>	T57 2351	S Cup A · M Cup A · L Cup A · XL Cup A
Elena <i>P. 14</i>	T57 2891	75 – 115 A – D
Fiberfill <i>P. 14</i>	T66 2272	1 – 14, triangular shape, symmetric
Fibrefill Oval <i>P. 14</i>	T66 2202	0 – 11, Oval, symmetric
Cara <i>P. 13</i>	T57 2301	75 – 105 AA/A · 70 – 105 B/C · 70 – 100 D/E Size extension for colour black 105 D/E and 110 – 120 AA/A, B/C
Post-OP Belt <i>P. 13</i>	T57 2313	S/86 – 92 cm · M/92 – 98 cm L/98 – 108 cm · XL/108 – 118 cm · XXL/118 – 128 cm

Sylvie <i>P. 14</i>	T57 4401	75 – 105 AA – D
---------------------	----------	-----------------

With forming cup seam

2-part cup



Diana

2-part cup with feminine details



Alina

Name	Item No.	Sizes/Cup
Julie* <i>P. 19</i>	T57 4101	75 – 95 AA, 70 – 90 A – C, 75 – 90 D
Ella <i>P. 18</i>	T57 5401	75 – 95 AA, D, 75 – 100 A – C
Anna* <i>P. 16</i>	T57 4602	75 – 100 A – C, 75 – 95 D
Lucy <i>P. 17</i>	T57 3801	75 – 100 A, D, 75 – 105 B, C (Poppy red NOT AVAILABLE in 100 D)
Eve <i>P. 17</i>	T57 4701	75 – 100 AA – C, 75 – 95 D
Carina <i>P. 17</i>	T57 5101	75 – 95 B – D
Diana <i>P. 19</i>	T57 2551	70 – 105 A – B, 75 – 105 C – D
Alina <i>P. 19</i>	T57 2431	80 – 95 AA, 70 – 95 A – B, 75 – 95 C

*Matching slip available

With forming cup seam

2-part cup

With lace, fully lined



Flora

3-part cup



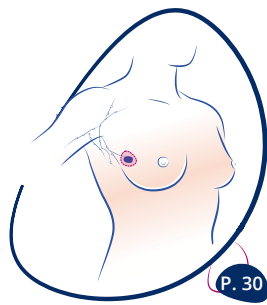
Lola

Name	Item No.	Sizes/Cup
Sophie <i>P. 23</i>	T57 5201	75 – 100 AA, 70 – 100 A – B, 70 – 90 C, 75 – 90 D
Eve Lace* <i>P. 21</i>	T57 4801	75 – 100 A – C, 75 – 95 D
Annabelle* <i>P. 22</i>	T57 4503	75 – 100 A – C, 75 – 95 D
Bianca <i>P. 24</i>	T57 2691	70 – 95 AA – B
Flora <i>P. 24</i>	T57 2081	70 – 95 AA – C, 70 – 90 D
Lola <i>P. 22</i>	T57 2583	70 – 105 A – C, 70 – 100 D, 70 – 95 E

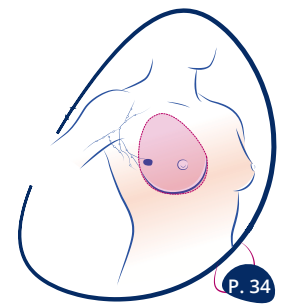
*Matching slip available

Name	Item No.	Sizes/Cup
Soft Comfort <i>P. 26</i>	T57 5301	75 – 105 B – E
Balanced Support <i>P. 27</i>	T57 1462	80 – 110 B – E, 80 – 105 F
Galant bf <i>P. 27</i>	T57 1541	80 – 100 A, 75 – 115 B – D, 85 – 115 E
Galant ff <i>P. 27</i>	T57 1551	75 – 100 A, 75 – 115 B – C, 85 – 115 D – E
Comfort <i>P. 27</i>	T57 1651	80 – 120 B – D, 90 – 120 E

SILIMA® BREAST FORM OVERVIEW



Care after breast-conserving surgery



Care after mastectomy

Basic

Volume compensation for uneven areas

Versatile due to 180° rotation



SILIMA® oval shell

Complete volume compensation/ full weight

Complete volume compensation/ reduced weight

Premium

For volume compensation for uneven areas

For very low volume compensation/ for nipple coverage

For medium volume compensation

For medium volume compensation with safety advantage

Compensation for up to 2 cup sizes

Particularly for arm oedemas or lymph-oedemas / also for extensive volume compensation

Pleasant air circulation

Complete volume compensation/reduced weight

Relief and increased wearing comfort

2 in 1 concept, especially for arm and thoracic oedema

Especially for large bust sizes



SILIMA® xtra



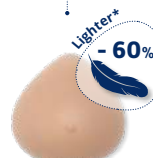
SILIMA® shell



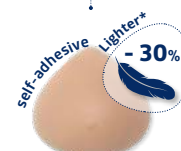
SILIMA® shell direct one



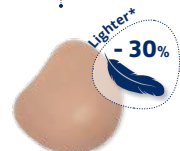
SILIMA® conform



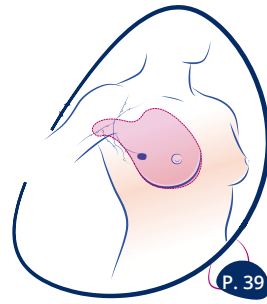
SILIMA® ultra light



SILIMA® direct




SILIMA® elite



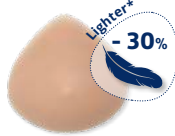
Treatment after radically modified mastectomy

Proven, natural standard care



SILIMA[®] classic symmetric

Especially for active women



SILIMA[®] light symmetric

Complete volume compensation/ full weight

Proven, natural standard care, available in three cup sizes



SILIMA[®] classic asymmetric

Complete volume compensation/reduced weight

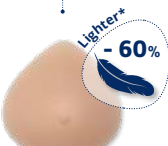
Recommended particularly for arm oedemas or lymphoedemas/ also for extensive volume compensation

For very sensitive scar tissue

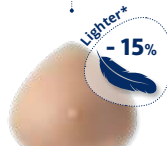
Pleasant air circulation

Especially for pressure-sensitive skin

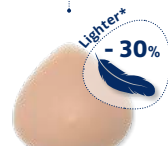
Especially soft and supple



SILIMA[®] ultra light



SILIMA[®] soft & light super soft

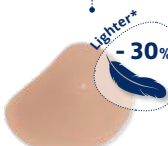


SILIMA[®] soft & light symmetric

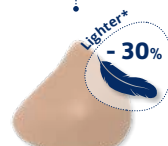
Complete volume compensation/reduced weight

Particularly soft, can be rotated 180°

Particularly soft, available in 3 cup sizes



SILIMA[®] soft & light heart shape



SILIMA[®] soft & light asymmetric

* Lighter than full gel SILIMA[®] breast forms.

SERENA®

Serena® comprises a variety of normal weight external silicone breast prostheses.

The soft and **skin-friendly materials** used for Serena® have been selected to give **maximum comfort**: consistency, elasticity and movement are very similar to the natural properties of the breast.

Serena® allows the women after mastectomy to recover their **natural comfort** with full confidence, and helps them to find their **everyday equilibrium**.

Serena® Triangular

- **Triangular shape, symmetric, anatomical form**
- For patients with no tissue deficit in the underarm area or slim women with a slight tissue deficit only.
- The form clings to the body well and without wrinkling and adjusts anatomically to the natural rounding of the ribcage.



Art.-No. 9201

Sizes
Cup 1-10

Serena® Heart

- **Heart shape, symmetric**
- Slight lateral extensions – for patients with little or no tissue deficit in the underarm area.
- Particularly suitable for larger sizes.



Art.-No. 9341

Sizes
Cup 1-15

Serena® Oval

- **Long oval shape, symmetric**
- Available in 2 versions: **round cavity** (9301) or **oval cavity** (9311).
- Underarm extension to compensate for tissue deficits.
- Versatile in use: can be turned upwards for very large deficits in the neckline area.



Art.-No. 9301 - 9311

Sizes
Cup 1-13



NATALIA and VICTORIA are **attractive** special-purpose bras, designed to be worn with the Serena® breast prostheses, holding them **securely** in place.

Natalia

- Delicate embroidery, back fastening, two pockets
- Excellent support and maximum comfort, especially for women with a larger bust

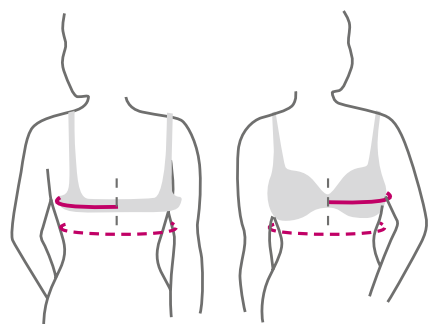
Art.-No. T672001
Sizes/Cup EUR (UK)
 Cup B – E, size 75 - 100 (34 – 44)
Fabric
 84 % polyamide
 12 % elastane
 4 % cotton
Colours
 White, Beige



Victoria

- Elegant lace bra, back fastening, with two pockets
- Firm support, even in larger sizes

Art.-No. T671001
Sizes/Cup EUR (UK)
 Cup A - E, size 75 - 105 (34 - 46)
Fabric
 78 % polyamide
 18 % elastane
 4 % cotton
Colours
 White, Beige, Black



— Top bust measurement
 - - - Underbust measurement

Underbust measurement (in cm)		68-72	Serena Size	73-77	Serena Size	78-82	Serena Size	83-87	Serena Size	88-92	Serena Size	93-97	Serena Size	98-102	Serena Size	103-107	Serena Size	108-112	Serena Size	113-117	Serena Size
Cup	Int. bra size	70		75		80		85		90		95		100		105		110		115	
AA	Top bust measurement (in cm)	80-82	1	85-87	2	90-92	3	95-97	4	100-102	5	105-107	6	110-112	7	115-117	8	120-122	9	125-127	10
A		82-84	2	87-89	3	92-94	4	97-99	5	102-104	6	107-109	7	112-114	8	117-119	9	122-124	10	127-129	11
B		84-86	3	89-91	4	94-96	5	99-101	6	104-106	7	109-111	8	114-116	9	119-121	10	124-126	11	129-131	12
C		86-88	4	91-93	5	96-98	6	101-103	7	106-108	8	111-113	9	116-118	10	121-123	11	126-128	12	131-133	13
D		88-90	5	93-95	6	98-100	7	103-105	8	108-110	9	113-115	10	118-120	11	123-125	12	128-130	13	133-135	14
E	90-92	6	95-97	7	100-102	8	105-107	9	110-112	10	115-117	11	120-122	12	125-127	13	130-132	14	135-137	15	

THUASNE DEUTSCHLAND GmbH

Im Steinkamp 12 · D-30938 Burgwedel
Tel.: +49 5139 988-0 · Fax: +49 5139 988-177
info@thuasne.de · www.thuasne.de

International

Tel.: +49 5139 988-204 · Fax: +49 5139 988-178
export@thuasne.de

THUASNE FRANCE, Head Office
120 rue Marius AUFAN · CS 10032
92309 Levallois-Perret Cedex · France
Tel.: +33 14105 9292 · Fax: +33 14105 8991
sales.export@thuasne.fr

THUASNE UK

Unit 4 Orchard Business Centre, North Farm Road
Tunbridge Wells, Kent TN2 3XF
Tel.: +44 1892 481620 · Fax: +44 1892 481609
orders@thuasne.co.uk · www.thuasne.co.uk

We reserve the right to modify our products as shown and
described in this catalogue, without previous notice.
Non-contractual photographs.

Please check the availability of products according to the countries.



TM13610BDGB8